

Georgia Environmental Protection Division  
Lower Flint-Ochlockonee Council  
**Existing Regulatory and Local Plan Summary**

---

## I. INTRODUCTION

The Georgia Comprehensive State-wide Water Management Plan, as approved by the Water Council on January 8, 2008, is the guiding document for the development of Regional Water Plans. The Lower Flint-Ochlockonee Water Planning Council (the Council) was designated to oversee the development of the Regional Water Plan for the Lower Flint-Ochlockonee Water Planning Region. A recommended plan is to be submitted by the Council to the Director of the Georgia Environmental Protection Division (EPD) by May 2, 2011. The regional water planning process uses an integrated water management approach, which includes water resource assessments, estimates of current and future water needs for supply and assimilative capacities, and identification and selection of management practices. It also builds upon the knowledge base of previous planning efforts by state and local governments and authorities throughout the planning region.

This memorandum summarizes existing water resources related regulations and reviews existing plans and practices, which were used to assist in the development of the Regional Water Plan by the Lower Flint-Ochlockonee Council. In particular, the Council conducted a comprehensive review of existing local and regional water management plans and relevant related documents to frame the selection of management practices. When possible, successful management practices already planned for and/or in use in the Region formed the basis for the water management practices selected by the Council. The information reviewed and summarized in this memorandum includes the following:

- Georgia Water Quality Control Act
- Watershed Assessments and Watershed Protection Plans
- *Water Quality in Georgia 2006- 2007* (305(b)/303(d) Report)
- TMDL Implementations Plans
- Nonpoint Source Implementation Plans
- Local Comprehensive Plans
- Water and sewer master plans
- Stormwater master plans
- Plans directly submitted for consideration by Council members
- Review of Local Comprehensive Plans and Water Resources Best Management Practices provided by the Southwest Georgia Regional Commission

Georgia Environmental Protection Division  
Lower Flint-Ochlockonee Council  
**Existing Regulatory and Local Plan Summary**

---

### **A. Regulatory Background**

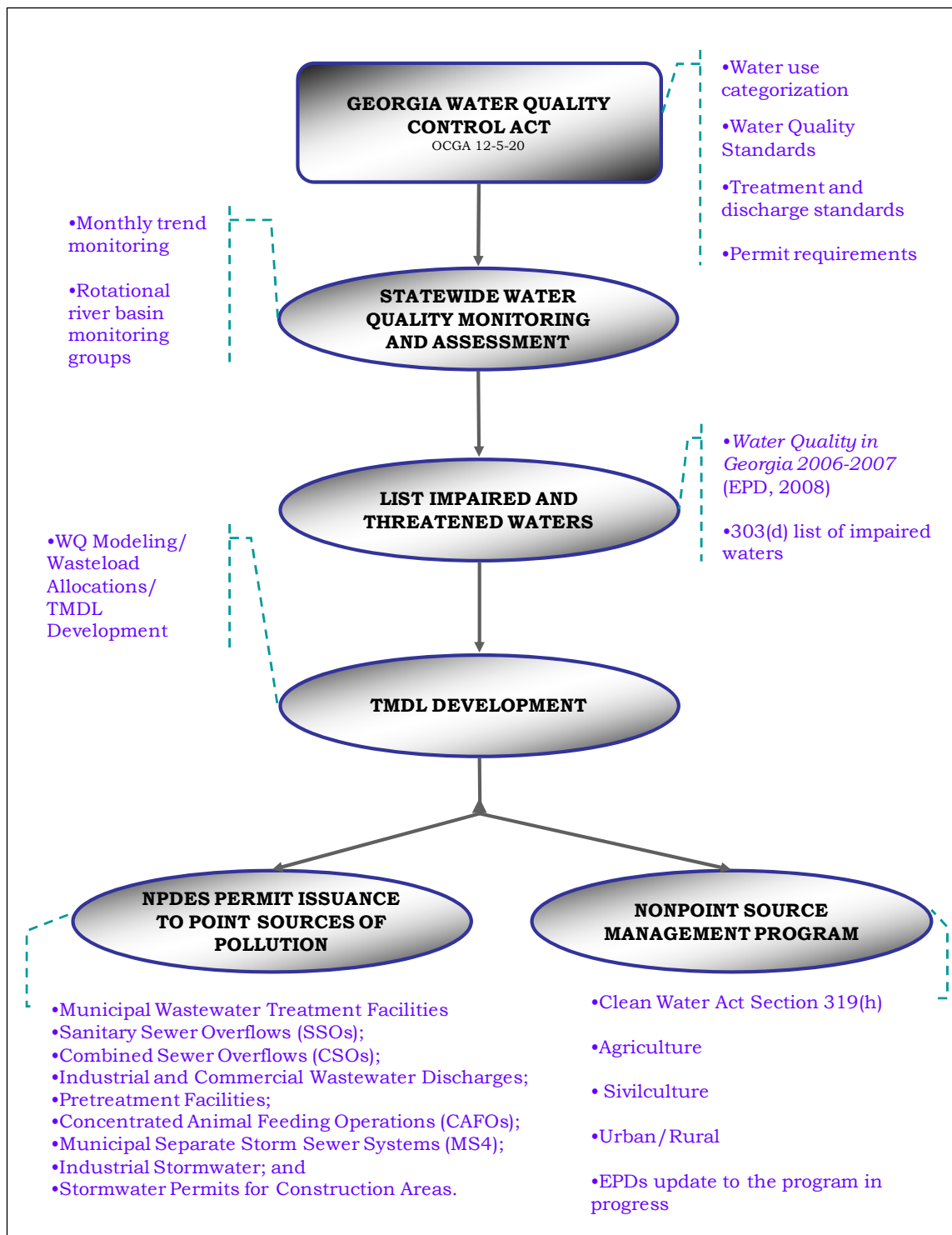
This section summarizes guiding federal and state regulations that affect water supply, water quality, and human health and safety. The Federal Water Pollution Control Act of 1972, as amended by the Clean Water Act of 1977 and the Federal Safe Drinking Water Act (SDWA) of 1986, are the primary federal regulatory drivers for protecting and improving water quality. Administration and enforcement of these Acts are delegated in Georgia to the EPD by the Environmental Protection Agency (EPA). Provisions of the Clean Water Act are established in the state primarily by the Water Quality Control Act, Chapter 391-3-6 of the Georgia Rules and Regulations. These rules provide guidance on and regulate water use classifications, water quality standards, surface water intakes, wastewater treatment and discharges, stormwater permitting, land disposal, underground injection control, water quality monitoring requirements, the State Revolving Fund (SRF), and state-wide water management planning.

The National Pollutant Discharge Elimination System (NPDES) permit program was established under the Clean Water Act to control water pollution by regulating the discharge of pollutants into waters of the United States from point sources. The NPDES program covers several pollutant sources that are regulated by permits issued by the EPD. In impaired waterbodies, these permits are to be based on established Total Maximum Daily Loads (TMDLs), which specify the maximum amount of pollutant that a waterbody can safely assimilate and still meet prescribed water quality standards.

Chapter 391-3-5 of the Georgia rules includes provisions as promulgated by the Georgia Safe Drinking Water Act of 1977 (OCGA 12-5-170), the Georgia Water Supply Act (OCGA 12-5-470), and the Georgia Water Well Standards Act (OCGA 12-5-120). Additional legislation affecting water quality and water resources throughout the state includes the Georgia Erosion & Sedimentation Control Act, the Georgia Safe Dams Act, and the Georgia Endangered Wildlife Act.

Statewide watershed protection programs which implement these regulations are illustrated in Figure I-1.

Georgia Environmental Protection Division  
 Lower Flint-Ochlockonee Council  
**Existing Regulatory and Local Plan Summary**



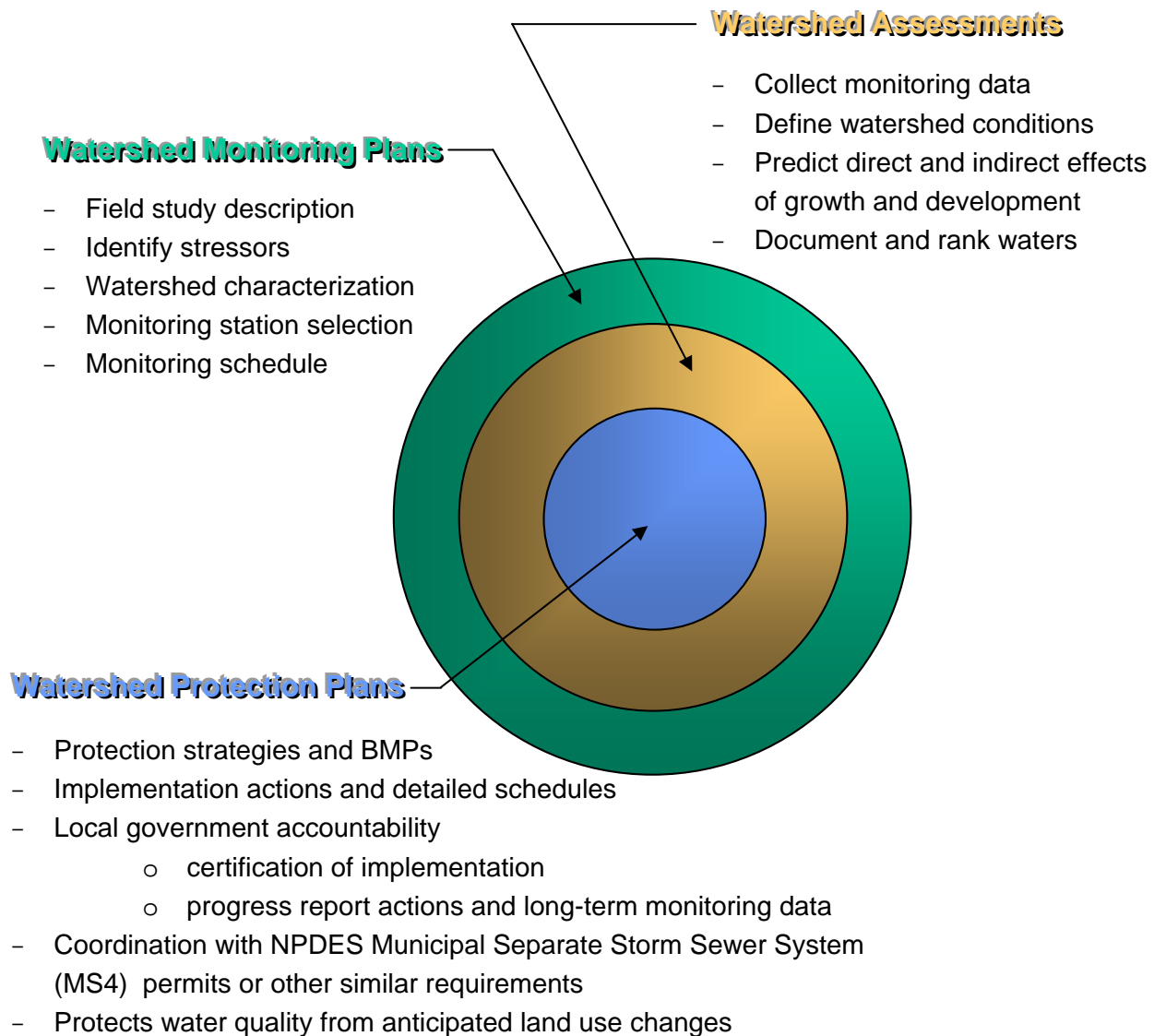
**Figure I-1. Statewide Watershed Protection Program**

Georgia Environmental Protection Division  
 Lower Flint-Ochlockonee Council  
**Existing Regulatory and Local Plan Summary**

---

**B. Watershed Assessments and Watershed Protection Plans**

EPD requires watershed monitoring plans, watershed assessments, and watershed protection plans from all publicly owned treatment works greater than 1 MGD or for new or expanding facilities as a part of the National Pollutant Discharge Elimination System. Those activities initiate monitoring, assessment and ultimately the establishment of Best Management Practices (BMPs) employed to enhance water quality from point and non-point sources of pollution. The three elements are outlined in Figure I-2.



**Figure I-2. Watershed Monitoring, Assessments, and Protection Plans**

Georgia Environmental Protection Division  
Lower Flint-Ochlockonee Council  
**Existing Regulatory and Local Plan Summary**

---

### **C. Water Quality in Georgia 2006-2007 (305(b)/303(d) Report)**

The state of Georgia assesses its water bodies for compliance with water quality standards criteria established for their designated uses as required by the Federal Clean Water Act (CWA). Waters of the state are monitored by EPD, USGS, and other local authorities contracted by EPD. Permanent monthly trend monitoring sites and an annual rotational river basin monitoring system are in place throughout the state to gather water quality data. Assessed water bodies are placed into two categories, supporting or not supporting their designated uses, depending on water quality assessment results. These water bodies are found on Georgia's 305(b)/303(d) list, as required by those sections of the Clean Water Act and are published in *Water Quality in Georgia 2006-2007* (EPD 2008).

Some of the not supporting water bodies are assigned to Georgia's 303(d) list, if "data indicates that at least one designated use is not being met and TMDL(s) need to be completed for one or more pollutants". Water bodies on the 303(d) list are required to have a Total Maximum Daily Load (TMDL) evaluation for the water quality constituent(s) in violation of the water quality standard. The TMDL represents the sum of allowable loads of a single pollutant from all contributing sources (including nonpoint sources) and includes a margin of safety and seasonal variations in water quality. The TMDL process provides for water quality-based controls to be developed to reduce pollution and restore and maintain water quality.

*Water Quality in Georgia 2006-2007* also includes information and background on Comprehensive State-wide Water Management Planning, wetlands programs, estuary and coastal programs, public health and aquatic life issues, water protection programs, groundwater and surface water supplies, and major issues and challenges affecting water resources.

### **D. TMDL Implementation Plans**

All assessed waters whose data indicate that at least one designated use is not being met and that TMDL(s) need to be completed for one or more pollutants are required to have TMDL Implementation Plans developed. These plans are used as a platform to facilitate corrective management strategies. These strategies vary depending on the pollutant of concern and severity of the problem. For point sources, NPDES issuance or re-issuance is performed by EPD in coordination with local governments and industries. For nonpoint sources of pollution TMDL

Georgia Environmental Protection Division  
 Lower Flint-Ochlockonee Council  
**Existing Regulatory and Local Plan Summary**

---

Implementation Plans are conducted through the development of Tier 3 and Tier 2 plans. These tiers are summarized in Table I-1.

| <b>Table I-1. TMDL Implementation Plan Development for Nonpoint Sources</b>                       |   |
|---|---|
| <b>Tier 3</b>   | <b>Tier 2</b>   |
| Developed by EPD  | Developed by Regional Development Centers (RDCs) and other public contractors         |
| Applicability:  | Applicability:  |
| Waters “partially impaired” due to fecal coliform   | Instituting and/or continuing local water quality protection and restoration programs |
| Waters “impaired” due to natural conditions   |   |
| Waters with fish consumption advisories   | Public outreach coordination  |
| Waters with legacy sediment   |   |
| Waters where TMDL models estimate a zero percent load reduction is necessary to achieve standards | Local stakeholder collaboration, planning, and implementation                         |

TMDL Implementation Plans include background information on monitoring activities, information on the pollutant of concern, potential sources of contamination, land use, implementation actions, monitoring plans, and planned outreach activities. Implementation actions may include wasteload allocation changes to existing NPDES permit holders or setting new NPDES permits to unpermitted sites or facilities.

**E. Nonpoint Source Management Plans and Programs**

The Nonpoint Source Management Program administered by the EPD provides regulatory and non-regulatory approaches to nonpoint source pollution abatement. Implementation of the program is achieved through collaboration with state and federal agencies, local and regional governments, state colleges and universities, businesses and industries, non-governmental organizations, and individual citizens.

Program specific approaches for agriculture, silviculture, and rural/urban nonpoint source pollution are implemented by different state agency leads other than EPD. The agencies and their programs are summarized in Table I-2.

Georgia Environmental Protection Division  
 Lower Flint-Ochlockonee Council  
**Existing Regulatory and Local Plan Summary**

| <b>Table I-2. Nonpoint Source Management Program</b> |  |  |
|--|--|--|
| <b>Sector</b>  | <b>Lead Agency</b>                                     | <b>Program Highlights</b>  |
| Agriculture  | Georgia Soil and Water Conservation Commission (GWSCC) | <ul style="list-style-type: none"> <li>• Non-regulatory</li> <li>• Voluntarily installed BMPs</li> <li>• Erosion and sediment control</li> <li>• Streambank restoration</li> <li>• Interagency support includes technical resources and financial resources for priority watersheds</li> <li>• Additional funding and assistance from Federal Farm Bill and NRCS programs</li> </ul>   |
| Silviculture   | Georgia Forestry Commission (GFC)                      | <ul style="list-style-type: none"> <li>• Non-regulatory</li> <li>• Voluntarily installed BMPs</li> <li>• Erosion and sediment control</li> <li>• Streambank restoration</li> <li>• Wetlands delineation</li> <li>• Community assistance program</li> <li>• Biennial Statewide BMP Compliance Survey conducted</li> </ul>   |
| Urban/Rural  | Department of Community Affairs (DCA)                  | <ul style="list-style-type: none"> <li>• Multiple targets for management practice implementation from site specific, system-wide, river corridors, and watersheds</li> <li>• Comprehensive watershed management</li> <li>• Water Resources Toolkit</li> <li>• Urban nonpoint management driven in part by TMDLs</li> <li>• <i>Georgia Stormwater Management Manual – Volume 1</i> and <i>Georgia Stormwater Policy Guide – Volume 2</i> (ARC, EPD 2001)</li> <li>• Georgia Project WET and Georgia Adopt-A-Stream Program</li> </ul> |



Georgia Environmental Protection Division  
Lower Flint-Ochlockonee Council  
**Existing Regulatory and Local Plan Summary**

---

A major financial driver behind implementation of the nonpoint source programs are federal monies allocated to the states under Section 319(h) of the Clean Water Act. With these funds, grants can be awarded by EPD directly to local governments or to the GWSCC, GFC, Regional Development Council's (RDCs), Resource Conservation and Development Councils (RC&Ds), and Universities who award and oversee 319(h) grants within their respective areas. Grantees are responsible for analysis of nonpoint source pollution problems within their jurisdictions and the design of an implementation plan employing innovative methods and practices to protect and improve water quality. Grant awardees are responsible for full implementation of the program and a 40 percent cost share with the state. Follow-up monitoring and load reduction reporting are submitted to the state upon project completion to gauge effectiveness.

#### **F. Local Comprehensive Plans**

The Georgia Department of Community Affairs (DCA) administers the rules promulgated by the Georgia Planning Act of 1989, which require all counties and cities within the state to develop comprehensive plans. The plans must provide 20 year forecasts of expected activities. The "Minimum Planning Standards" per Chapter 391-3-16 of the Georgia Rules and Regulations, require those plans to establish protection measures for the water resources within the given jurisdictional boundary. The rules specifically provide guidance for water supply watersheds, groundwater recharge areas, wetlands protection, river corridor protection, and mountain protection.

City and county roles and responsibilities for water supply and wastewater services are established via the Service Delivery Strategy Act and must be coordinated with the comprehensive plans. Service Delivery Strategies are defined as the "intergovernmental arrangement among city governments, the county government, and other affected entities within the same county for delivery of community services..." per Chapter 110-12-1 of the DCA rules. Water related services are provided by the city, county, or both per negotiated agreements under the Act.

It is noted that water and sewer master plans are not necessary per the rules and regulations as a stand-alone document. In many cases however, the development of such master plans are required as part of a discharge permit condition. This is particularly the case in large urban areas.



Georgia Environmental Protection Division  
Lower Flint-Ochlockonee Council  
**Existing Regulatory and Local Plan Summary**

---

**G. Stormwater Management Plans**

Similar to water and sewer master planning, stormwater management planning should be included within local comprehensive planning efforts. The local provider(s) of stormwater system services should be identified per the Service Delivery Strategy Act within individual counties.

Municipal separate storm sewer systems (MS4) that discharge into surface waters are required to have a permit under the Clean Water Act. The U.S. Environmental Protection Agency (EPA) NPDES stormwater regulations have established two phases (Phase I and Phase II) for the municipal stormwater permit program. Phase I communities have individual permits and discharge limitations, and Phase II communities are covered under a general permit requiring implementation of BMPs in lieu of monitoring. MS4 permit holders are required to submit annual Stormwater Management Plans (SWMP) to the EPD.

In addition to municipalities, the Phase I federal regulations include general permit conditions for 11 industrial subcategories. EPD issued a corresponding NPDES General Permit No. GAR000000 that regulates stormwater discharge for 10 industrial categories.

Georgia Environmental Protection Division  
 Lower Flint-Ochlockonee Council  
**Existing Regulatory and Local Plan Summary**

---

## II. Findings

### A. Watershed Assessments and Watershed Protection Plans

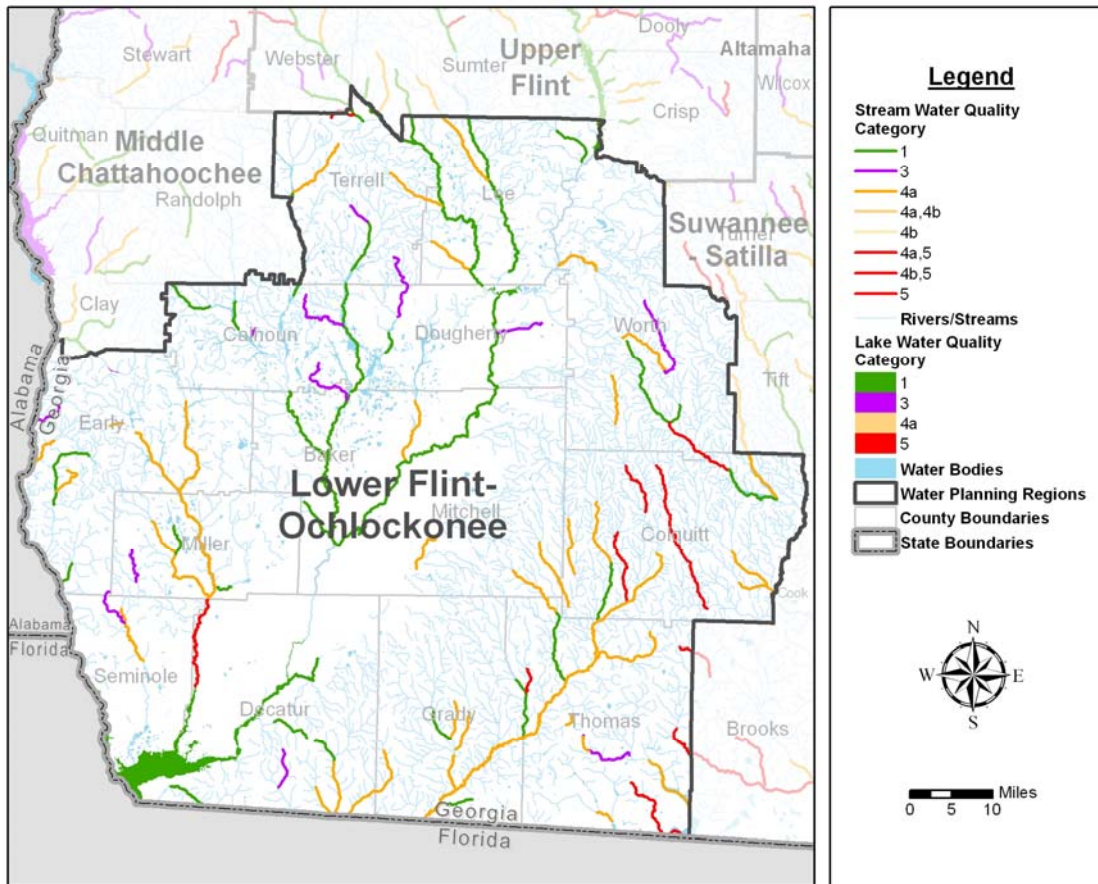
Several cities and counties within the planning region have recently completed or are in the process of developing a Watershed Monitoring Plan (WMP), Watershed Assessment (WA), and Watershed Protection Plan (WPP). A summary of ongoing assessments as provided by EPD is presented in Table II-1.

| <b>Table II-1. Ongoing Watershed Assessments and Protection Plans</b> |                         |                    |            |           |            |
|---|-------------------------|--------------------|------------|-----------|------------|
| <b>City -or- County</b>   | <b>NPDES Permit No.</b> | <b>Basin</b>       | <b>WMP</b> | <b>WA</b> | <b>WPP</b> |
| City of Albany  | GA0037222               | Flint              | x          |           |            |
| City of Arlington   | GA0026204               | Flint              | x          | x         | x          |
| City of Bainbridge  | GAU050140               | Flint              | x          |           |            |
| City of Blakely   | GA0025585               |                    | x          | x         |            |
| City of Camilla   | GA0200088               | Flint              |            |           |            |
| City of Dawson  | GA0021326               | Flint              |            |           |            |
| Decatur County  |                         | Flint/ Ochlockonee | x          | x         |            |
| City of Donalsonville   | GA0026133               | Flint              |            |           |            |
| Lee County  | GA0026603               | Flint              | x          | x         | x          |
| City of Leesburg  | GA0026638               | Flint              | x          | x         |            |
| City of Thomasville   | GA0024082               | Ocklockonee        |            |           |            |

### B. Water Quality in Georgia 2006-2007 (305(b)/303(d) Report)

The 305(b)/303(d) list includes assessed waters by major watershed and assigns a categorical value based on whether or not the water is meeting water quality standards to support its designated use classification. A summary of the 305(b)/303(d) list is provided in Figure II-1. The 305(b)/303(d) list for stream segments and lakes within the Lower Flint-Ochlockonee Water Planning Region is an Attachment to this technical memorandum (see Tables A-1 and A-2).

Georgia Environmental Protection Division  
 Lower Flint-Ochlockonee Council  
**Existing Regulatory and Local Plan Summary**



**Category Definitions:**

- 1 – Waters meeting designated use(s).
- 2 – Waters having more than 1 designated use and data indicate at least one is being met, but there is insufficient evidence to determine that all uses are being met.
- 3 – Insufficient data or other information to make a determination as to whether or not the designated use(s) is being met
- 4a – Data indicate that at least one designated use is not being met, but TMDL(s) have been completed for the parameter(s) that are causing impairment
- 4b – Data indicate that at least one designated use is not being met, but there are actions in place (other than a TMDL) that are predicted to lead to compliance with water quality standards.
- 4c – Data indicate that one designated use is not being met, but the impairment is not caused by a pollutant.
- 5 – Data indicates that at least one designated use is not being met and TMDL(s) need to be completed for one or more pollutants.

| River Basin        | Total River Miles Impaired in the Middle Chattahoochee Region |                 |       |       | Total                      |
|--------------------|---|-----------------|-------|-------|----------------------------|
| Chattahoochee      | 0   | 0               | 0     | 10    | 10                         |
| Flint              | 45  | 58              | 15    | 67    | 136                        |
| Ochlockonee        | 35  | 124             | 63    | 16    | 200                        |
| Suwannee           | 49  | 40              | 0     | 12    | 81                         |
| Criterion Violated | DO  | Fecal Coliforms | Metal | Other | Regional Total = 427 miles |

Note: Stream reaches may have more than one criterion violated, i.e. the sum of DO, Fecal Coliforms, Metals, and Other may be greater than the total number of stream miles listed as impaired. Metals includes mercury trophic-weighted residue value and fish consumptive guidance.

**Figure II-1. 305(b)/303(d) Summary for Lower Flint-Ochlockonee Region**

Georgia Environmental Protection Division  
Lower Flint-Ochlockonee Council  
**Existing Regulatory and Local Plan Summary**

---

### **C. TMDL Implementation Plans**

TMDL implementation plans for stream reaches and lakes within the Lower Flint-Ochlockonee Region are summarized in Table A-1. The pollutant criterion violated and potential cause codes as defined by EPD are provided in the table along with the year which the plan was adopted. These listed waters correspond to assessment category 4a stream reaches as is defined in Figure II-1. EPD continues to monitor and assess these impaired waters per their respective plans. Future permitting within watersheds having impaired waters will continue to be reassessed as additional information becomes available. All TMDL Implementation Plans are available through the following EPD website: [http://www.gaepd.org/Documents/TMDL\\_page.html](http://www.gaepd.org/Documents/TMDL_page.html).

### **D. Nonpoint Source Management Plans and Programs**

Best management practice programs and oversight are in place regarding water quality protection in the region and the state by the Georgia Forestry Commission (GFC) in cooperation with EPD. The GFC investigates water quality complaints and works with landowners, timber buyers, and loggers to correct any problems. In cases where the GFC cannot get satisfactory compliance, the case is turned over to EPD for enforcement. In addition the GFC conducts a biennial statewide Best management Practice (BMP) compliance survey. The GFC conducts field surveys and documents compliance with implementation of BMPs. In 2009, the GFC completed a standardized survey at 221 sites totaling 27,000 acres. The number of acres with BMP compliances was 99.7%. This effort provides the forestry industry with documentation of BMP compliance.

Several active Section 319(h) projects fall within the region or are statewide initiatives. These projects are summarized in Table II-2. On August 16, 2010, EPD issued a memorandum to the regional councils to inform them that recommended nonpoint source pollution management projects identified in the regional water plans could be considered for 319(h) funding. The Lower Flint-Ochlockonee Council issued a letter of support to Georgia EPD on February 21, 2011 regarding a Section 319(h) grant proposal from the Golden Triangle Resource Conservation & Development Council (RC&D) to implement nonpoint source control on dirt roads in the Spring Creek watershed. This letter is appended to this technical memorandum. The Lower Flint-Ochlockonee Council intends to continue coordinating with EPD and Golden Triangle RC&D to support implementation of this 319(h) project in the Lower Flint-Ochlockonee Region as part of the implementation of the Council's Regional Water Plan.

Georgia Environmental Protection Division  
 Lower Flint-Ochlockonee Council  
**Existing Regulatory and Local Plan Summary**

| <b>Table II-2. Nonpoint Source Management Plans/Programs</b>                           |                              |  |
|--|------------------------------|--|
| <b>Plan/Program Name</b>   | <b>Lead Agency</b>           | <b>Description</b>   |
| Silvicultural Nonpoint Source Management Program                                       | Georgia Forestry Commission  | Statewide effort to assess the use of BMPs within the Forestry community   |
| Georgia Stormwater Management Manual - Volume 3  | Atlanta Regional Commission  | Volume 3 will identify "good housekeeping" measures to control and reduce nonpoint source pollution from stormwater. These measures will be for use Statewide  |
| Upper Ocklockonee River Basin TMDL Implementation Project                              | GSWCC                        | Coordination with local landowners; Nutrient management plan development; Installation of BMPs; Includes portions of Colquitt, Grady, Mitchell, Thomas, and Worth counties; Implementing Agricultural Components of TMDL Implementation Plans for the Upper Ochlockonee River Basin            |
| Spring Creek Watershed Management  | Golden Triangle RC&D Council | Funding of the Spring Creek Watershed Partnership, comprised of local citizens and landowners, local, state and federal governments, and non-profit organizations to prevent nonpoint source pollution, assist in promoting BMP implementation practices and distribute Section 319(h) funding |
| Continued Implementation of the Spring Creek Watershed Management Plan (Phase II)      | Golden Triangle RC&D Council | Project will continue ongoing efforts to protect and restore Spring Creek  |
| Operation Clean Aquifers   | Golden Triangle RC&D Council | Project focused on protecting ground and surface water from agriculture related nonpoint source pollution  |
| Demonstrating the Benefits of Portable Timber Bridges for Forest Road Stream Crossings | Pine Country RC&D Council    | BMP demonstration project / forestry   |
| Better Back Roads  | Two Rivers                   | Project is using practices from the Better Back  |



Georgia Environmental Protection Division  
 Lower Flint-Ochlockonee Council  
**Existing Regulatory and Local Plan Summary**

| <b>Table II-2. Nonpoint Source Management Plans/Programs</b> |                           |  |
|--|---------------------------|--|
| <b>Plan/Program Name</b>                                     | <b>Lead Agency</b>        | <b>Description</b>   |
| Sediment Reduction Project                                   | RC&D Council              | Roads Manual to address unpaved roads as sources of sediment |
| Georgia Better Back Roads Manual                             | Pine Country RC&D Council | Nonpoint source tool development                             |

**E. Local Comprehensive Plans**

The Georgia Department of Community Affairs maintains all local comprehensive plans determined to be compliant with the Local Planning Requirements. Approved plans falling with the Lower Flint-Ochlockonee Region and reviewed by the Lower Flint-Ochlockonee Council for consistency with the Lower Flint-Ochlockonee Regional Water Plan are summarized in Table II-3.

| <b>Table II-1. Local Government Master/Management Plan Survey</b> |                   |                           |                             |
|---|-------------------|---------------------------|-----------------------------|
| <b>County</b>   | <b>City/Towns</b> | <b>Comprehensive Plan</b> | <b>Community Assessment</b> |
| Baker   | -                 |                           | <b>x</b>                    |
|   | Newton            |                           |                             |
| Calhoun   | -                 | <b>x</b>                  |                             |
|   | Arlington         |                           |                             |
|   | Edison            |                           |                             |
|   | Morgan            |                           |                             |
|   | Leary             |                           |                             |
|   | -                 |                           |                             |
| Colquitt  | Doerun            |                           |                             |
|   | Funston           |                           |                             |
|   | Riverside         |                           |                             |
|   | Moultrie          |                           |                             |
|   | Norman Park       |                           |                             |
|   | Ellenton          |                           |                             |
|   | Berlin            |                           |                             |
| Decatur   | -                 |                           | <b>x</b>                    |

Georgia Environmental Protection Division  
 Lower Flint-Ochlockonee Council  
**Existing Regulatory and Local Plan Summary**

| <b>Table II-1. Local Government Master/Management Plan Survey</b> |                   |                           |                             |
|---|-------------------|---------------------------|-----------------------------|
| <b>County</b>   | <b>City/Towns</b> | <b>Comprehensive Plan</b> | <b>Community Assessment</b> |
|   | Brinson           |                           |                             |
|   | Bainbridge        | x                         |                             |
|   | Climax            |                           |                             |
|   | Attapulgus        |                           |                             |
| Dougherty   | -                 | x                         |                             |
|   | Albany            |                           |                             |
| Early   | -                 | x                         |                             |
|   | Blakely           |                           |                             |
|   | Damascus          |                           |                             |
|   | Jakin             |                           |                             |
| Grady   | -                 |                           | x                           |
|   | Cairo             |                           |                             |
|   | Whigham           |                           |                             |
| Lee   | -                 | x                         |                             |
|   | Smithville        |                           |                             |
|   | Leesburg          |                           |                             |
| Miller  | -                 |                           | x                           |
|   | Colquitt          |                           |                             |
| Mitchell  | -                 | x                         |                             |
|   | Baconton          |                           |                             |
|   | Camilla           |                           |                             |
|   | Sale City         |                           |                             |
|   | Pelham            |                           |                             |
| Seminole  | -                 |                           | x                           |
|   | Donalsonville     |                           |                             |
|   | Iron City         |                           |                             |
| Terrell   | -                 | x                         |                             |
|   | Dawson            | x                         |                             |
|   | Sasser            |                           |                             |



Georgia Environmental Protection Division  
 Lower Flint-Ochlockonee Council  
**Existing Regulatory and Local Plan Summary**

| <b>Table II-1. Local Government Master/Management Plan Survey</b> |                   |                           |                             |
|---|-------------------|---------------------------|-----------------------------|
| <b>County</b>   | <b>City/Towns</b> | <b>Comprehensive Plan</b> | <b>Community Assessment</b> |
|   | Bronwood          |                           |                             |
|   | Parrott           |                           |                             |
| Thomas  | -                 |                           | <b>x</b>                    |
|   | Thomasville       |                           |                             |
|   | Ochlocknee        |                           |                             |
|   | Coolidge          |                           |                             |
|   | Boston            |                           |                             |
| Worth   | -                 |                           | <b>x</b>                    |
|   | Warwick           |                           |                             |
|   | Sylvester         |                           |                             |
|   | Poulan            |                           |                             |
|   | Sumner            |                           |                             |

Additional plans and reports provided to the Council were also reviewed and where applicable used to frame the selection of management practices. When possible, successful management practices already planned for and/or in use in the Region formed the basis for the water management practices selected by the Council. These plans were also used to refine water and wastewater forecasting when necessary. A summary of planning reports and documents submitted directly by Council members for consideration is provided in Table II-4.

| <b>Table II-4. Additional Plans Considered When Selecting Management Practices</b> |   |
|--|---|
| <i>Plan Type or Specific Title</i>   | Flint River Basin Regional Water Development and Conservation Plan  |
| <i>Regional Resource(s) Impacted (Watershed/Aquifer)</i>                           | Watersheds within Subarea 4 of the Flint River Basin (Spring Creek, Ichawaynochaway Creek, Lower Flint River), Upper Floridan Aquifer |
| <i>Organization or Entity Associated With Plan</i>                                 | Georgia EPD   |
| <i>Date of Plan</i>  | March 20, 2006  |

Georgia Environmental Protection Division  
 Lower Flint-Ochlockonee Council  
**Existing Regulatory and Local Plan Summary**

| <b>Table II-4. Additional Plans Considered When Selecting Management Practices</b>   |  |
|--|--|
| <i>Description of Relevant Plan Content (i.e. Practices currently planned for and/or in use in the Region to form the basis for the Council's selected water management practices)</i> | See section III of this technical memorandum   |
| <i>Plan Type or Specific Title</i>   | A Comprehensive Wildlife Conservation Strategy for Georgia   |
| <i>Regional Resource(s) Impacted (Watershed/Aquifer)</i>   | Multiple regional surface waters   |
| <i>Organization or Entity Associated With Plan</i>   | Georgia Department of Natural Resources – Wildlife Resources Division  |
| <i>Date of Plan</i>  | August, 31, 2005   |
| <i>Description of Relevant Plan Content (i.e. Practices currently planned for and/or in use in the Region to form the basis for the Council's selected water management practices)</i> | Emphasizes the conservation of “Georgia’s animals, plants, and natural habitats through proactive measures emphasizing voluntary and incentive-based programs on private lands, habitat restoration and management by public agencies and private conservation organizations, rare species survey and recovery efforts, and environmental education and public outreach activities.” A summary of aquatic species which are currently under state or federal protection and a list of high priority waters specific to the Lower Flint-Ochlockonee region identified by the Wildlife Resources Division are appended to this document. |

**F. Stormwater Management Plans**

A survey of existing permitted municipal separate stormwater systems (MS4) within the planning region has been performed. Each local and/or county government or jurisdiction with a MS4 NDES permit is responsible for submitting an annual stormwater management plan to EPD. Permitted MS4 discharges within the planning region are presented in Table III-5.

Georgia Environmental Protection Division  
 Lower Flint-Ochlockonee Council  
**Existing Regulatory and Local Plan Summary**

| <b>Table II-5. Permitted Municipal Separate Stormwater Systems (MS4) in the Lower Flint-Ochlockonee Region</b> |  |
|--|--|
| <b>Phase I Permits</b><br>(individual permits and discharge limitations)                                       | <b>Phase II Permits</b><br>(general permit holders requiring implementation of BMPs in lieu of monitoring) |
| None   | Albany (Dougherty County)  |
|  | Leesburg (Lee County)  |

A survey of existing regulated stormwater discharges within the planning region has also been performed. Each discharger is responsible for submitting an annual stormwater management plan to EPD. Regulated stormwater discharges within the planning region are presented in Table II-6.

| <b>Table II-6. Permitted Industrial Stormwater Discharges</b> |  |             |
|---|--|-------------|
| <b>NOI#</b>   | <b>INDUSTRY</b>                            | <b>CITY</b> |
| <b>Terrell County</b>   |  |             |
| 00246   | TYSON FOODS, INC.                          | DAWSON      |
| 00059   | DAWSON MANUFACTURING COMPANY               | DAWSON      |
| 10298   | GOLDEN PEANUT CO                           | DAWSON      |
| <b>Lee County</b>   |  |             |
| 04190   | PUBLIC WORKS AND LANDFILL                  | LEESBURG    |
| 03028   | MARTIN MARIETTA AGGREGATES - ALBANY QUARRY | LEESBURG    |
| <b>Worth County</b>   |  |             |
| 02210   | SYLVESTER R/M PLANT                        | SYLVESTER   |
| <b>Dougherty</b>  |  |             |
| 02200   | SOUTHEASTERN FREIGHT LINES, INC.           | ALBANY      |
| 01650   | COATS & CLARK, INC.                        | ALBANY      |
| 02808   | PROCTER & GAMBLE PAPER PRODUCTS COMPANY    | ALBANY      |
| 00485   | GEORGIA - PACIFIC CORPORATION              | ALBANY      |
| 01739   | D & D WOOD PRESERVING, INC.                | ALBANY      |
| 00651   | AAA COOPER TRANSPORTATION                  | ALBANY      |
| 02932   | MILLER BREWING COMPANY                     | ALBANY      |
| 00966   | COOPER TIRE COMPANY                        | ALBANY      |
| 01809   | MARINE CORPS LOGISTICS BASE                | ALBANY      |

Georgia Environmental Protection Division  
 Lower Flint-Ochlockonee Council  
**Existing Regulatory and Local Plan Summary**

| <b>Table II-6. Permitted Industrial Stormwater Discharges</b> |  |               |
|---|--|---------------|
| <b>NOI#</b>   | <b>INDUSTRY</b>                                | <b>CITY</b>   |
| 01204   | CELLO - FOIL PRODUCTS, INC.                    | ALBANY        |
| 01973   | REEVES CONSTRUCTION COMPANY                    | ALBANY        |
| 02445   | UNITED PARCEL SERVICE, INC.                    | ALBANY        |
| 01163   | MARS SNACKFOODS US, LLC                        | ALBANY        |
| 02518   | FLORIDA ROCK & TANK LINES, INC.                | ALBANY        |
| 02921   | FEDERAL EXPRESS ABYA                           | ALBANY        |
| 02848   | OXFORD CONSTRUCTION COMPANY - ASPHALT PLANT #1 | ALBANY        |
| 10572   | USF HOLLAND INC (AB)                           | ALBANY        |
| 03062   | CONCRETE ENTERPRISES, INC.                     | ALBANY        |
| 03049   | SCHUFF STEEL, INC.                             | ALBANY        |
| 10478   | MAPLE HILL C&D LANDFILL                        | ALBANY        |
| 10332   | TARA FOODS                                     | ALBANY        |
| 00596   | USF HOLLAND INC.                               | RINGGOLD      |
| 03459   | NORFOLK SOUTHERN - ALBANY YARD                 | ALBANY        |
| 10204   | CON-WAY FREIGHT                                | ALBANY        |
| 10202   | AAA USED AUTO PARTS                            | ALBANY        |
| 10407   | ALBANY RECYCLING SERVICES INC                  | ALBANY        |
| 03639   | VEOLIA ES SOUTH GEORGIA HAULING                | ALBANY        |
| 03634   | FLEMING GAISSERT ROAD MSW LANDFILL             | ALBANY        |
| 10249   | FLORIDA ROCK - ALBANY READY MIX                | ALBANY        |
| <b>Early County</b>   |  |               |
| 10336   | MAVERICK TUBE                                  | CEDAR SPRINGS |
| 00036   | BLAKELY R/M PLANT                              | BLAKELY       |
| 03044   | GEORGIA PACIFIC CEDAR SPRINGS LLC              | CEDAR SPRINGS |
| 10513   | GOLDEN PEANUT, LLC SPECIALTY PRODUCTS PLANT    | BLAKELY       |
| 10322   | TURNAGE TRACTOR PARTS                          | BLAKELY       |
| 03216   | HPI GEORGIA INC.                               | DAMASCUS      |
| 00449   | GENERAL CHEMICAL CORPORATION                   | CEDAR SPRINGS |

Georgia Environmental Protection Division  
 Lower Flint-Ochlockonee Council  
**Existing Regulatory and Local Plan Summary**

| <b>Table II-6. Permitted Industrial Stormwater Discharges</b> |   |             |
|---|---|-------------|
| <b>NOI#</b>   | <b>INDUSTRY</b>                                       | <b>CITY</b> |
| <b>Mitchell County</b>  |   |             |
| 03949   | EQUITY GROUP GEORGIA DIVISION<br>LLC.PROCESSING PLANT | CAMILLA     |
| 03896   | WIND GAP FARMS  | BACONTON    |
| 03951   | EQUITY GROUP GEORGIA DIVISION LLC - FEED<br>MILL      | CAMILLA     |
| 03952   | EQUITY GROUP GEORGIA DIVISION, LLC -<br>HATCHERY      | CAMILLA     |
| 02209   | CAMILLA R/M PLANT                                     | CAMILLA     |
| 03950   | EQUITY GROUP GEORGIA DIVISION LLC - TRUCK<br>SHOP     | CAMILLA     |
| <b>Colquitt County</b>  |   |             |
| 03061   | CONCRETE ENTERPRISES, INC.                            | MOULTRIE    |
| 02860   | BEADLES LUMBER COMPANY                                | MOULTRIE    |
| 01150   | HUBBELL DIE CASTING                                   | MOULTRIE    |
| 03801   | NATIONAL BEEF PACKING CO.                             | MOULTRIE    |
| 10414   | SOWEGA TIRE RECYCLERS                                 | DOERUN      |
| 01964   | REEVES CONSTRUCTION COMPANY                           | MOULTRIE    |
| 02120   | UNIVERSAL FOREST PRODUCTS, INC.                       | MOULTRIE    |
| 10100   | COX TRUCK & VAN                                       | MOULTRIE    |
| 10207   | COX AUTO PARTS  | MOULTRIE    |
| 10261   | SANDERSON FARMS                                       | MOULTRIE    |
| <b>Decatur County</b>   |   |             |
| 03613   | AMERICAN FIBERS & YARNS CO. - BAINBRIDGE              | BAINBRIDGE  |
| 04519   | DECATUR COUNTY MSWLF                                  | ATTAPULGUS  |
| 03622   | TEXPAR ENERGY, INC.                                   | BAINBRIDGE  |
| 04506   | GEORGIA GULF SULFUR                                   | BAINBRIDGE  |
| 10295   | FLORIDA ROCK & TANK LINES                             | BAINBRIDGE  |
| 01197   | ELBERTA CRATE AND BOX COMPANY                         | BAINBRIDGE  |
| 01647   | PROPEX  | BAINBRIDGE  |
| 02850   | OXFORD CONSTRUCTION COMPANY - ASPHALT<br>PLANT NO 4   | BAINBRIDGE  |
| 00037   | BAINBRIDGE R/M PLANT                                  | BAINBRIDGE  |
| 02775   | BASF CATALYSTS - ATTAPULGUS OPERATION                 | ATTAPULGUS  |

Georgia Environmental Protection Division  
 Lower Flint-Ochlockonee Council  
**Existing Regulatory and Local Plan Summary**

| <b>Table II-6. Permitted Industrial Stormwater Discharges</b> |   |             |
|---|---|-------------|
| <b>NOI#</b>   | <b>INDUSTRY</b>                                   | <b>CITY</b> |
| 1190  | SCHNITZER SE                                      | BAINBRIDGE  |
| 3863  | OXFORD CONSTRUCTION COMPANY - ASPHALT PLANT NO. 2 | BAINBRIDGE  |
| 10124   | ATTAPULGITE MINING INC                            | ATTAPULGUS  |
| 03252   | SHAW INDUSTRIES PLANT # 70 & 86                   | BAINBRIDGE  |
| 10042   | CRESCENT LAKE MINE                                | ATTAPULGUS  |
| <b>Grady County</b>   |   |             |
| 04160   | THOMASVILLE R/M PLANT (FLORIDA ROCK IND.)         | THOMASVILLE |
| 04159   | SEMINOLE MARINE                                   | CAIRO       |
| 04442   | FULGHUM FIBRES / CAIRO DIVISION                   | CAIRO       |
| 00029   | TIMKEN CAIRO                                      | CAIRO       |
| 10408   | GRADY COUNTY MINE                                 | CAIRO       |
| 02448   | UPS, INC.   | CAIRO       |
| 00033   | CAIRO R/M PLANT                                   | CAIRO       |
| <b>Thomas County</b>  |   |             |
| 00257   | FLOWERS BAKING COMPANY OF THOMASVILLE, LLC.       | THOMASVILLE |
| 02800   | WAVERLY MINERALS, INC.                            | MEIGS       |
| 02799   | CLEAVER-BROOKS                                    | THOMASVILLE |
| 04447   | FEDEX NATIONAL LTL, INC.                          | THOMASVILLE |
| 03799   | GEORGIA PIPE COMPANY                              | THOMASVILLE |
| 10622   | CROWDER SAND MINE                                 | THOMASVILLE |
| 01605   | HOOD INDUSTRIES, INC.                             | THOMASVILLE |
| 03417   | CATERPILLAR, INC.                                 | THOMASVILLE |
| 04428   | THOMAS COUNTY SAND MINE                           | OCHLOCKNEE  |
| 00412   | THOMAS COUNTY - THOMASVILLE SUNSET DR. MSW/C&D LF | THOMASVILLE |
| 01994   | GRIFFIN INDUSTRIES, INC.                          | THOMASVILLE |
| 04437   | PACK'S AUTO PARTS & SALVAGE, INC.                 | THOMASVILLE |
| 00436   | OIL - DRI CORPORATION - SMITH MINE #101-96        | OCHLOCKNEE  |
| 00437   | OIL - DRI CORPORATION THOMPSON MINE #788-85       | OCHLOCKNEE  |
| 00470   | BALFOUR LUMBER COMPANY, INC.                      | THOMASVILLE |
| 00483   | TURBINE ENGINE COMPONENTS TECHNOLOGIES            | THOMASVILLE |
| 00492   | OIL - DRI CORPORATION NORTH & SOUTH PLANTS        | OCHLOCKNEE  |

Georgia Environmental Protection Division  
 Lower Flint-Ochlockonee Council  
**Existing Regulatory and Local Plan Summary**

| <b>Table II-6. Permitted Industrial Stormwater Discharges</b> |                                   |             |
|---|-----------------------------------|-------------|
| <b>NOI#</b>   | <b>INDUSTRY</b>                   | <b>CITY</b> |
| 04329   | OIL-DRI BARLOW MINE SMLUP 1322-01 | OCHLOCKNEE  |
| 00120   | CAPITAL AUTO PARTS, INC.          | THOMASVILLE |
| 04330   | OIL-DRI HURST MINE SMLUP 1603-06  | OCHLOCKNEE  |
| 00949   | THOR MINE                         | OCHLOCKNEE  |
| 01047   | SIEMENS WATER TECHNOLOGIES CORP   | THOMASVILLE |

### **G. Georgia Association of Regional Commissions – Review of Local Comprehensive Plans & Water Resource Best Management Practices**

A review of local comprehensive plans and water resources best management practices provided by the Southwest Georgia Regional Commission was also used to assist the Council in framing management practice selection. The regional commissions established throughout the state help develop and promote comprehensive planning to sustainably develop regional economies while meeting the minimum planning standards established in Chapter 391-3-16 of the Georgia Rules and Regulations.

A list of best management practices established in existing local plans provided by the Southwest Georgia Regional Commission is an Attachment to this technical memorandum (see table A-3).

## **III. Flint River Basin Regional Water Development and Conservation Plan**

The adopted Flint River Basin Regional Water Development and Conservation Plan (the Plan) was released on March 20, 2006 by EPD. This document provides the current basis for agricultural water use permit issuance by EPD as authorized by the Water Quality Act (O.C.G.A. 12-5-31(h)) and Groundwater Use Act (O.C.G.A. 12-5-96(e)) with a focus on agricultural use in the lower Flint River Basin. The statutes direct the Plan to:

- Promote conservation and reuse of water;
- Guard against a shortage of water;
- Promote the efficient use of water resources; and



Georgia Environmental Protection Division  
Lower Flint-Ochlockonee Council  
**Existing Regulatory and Local Plan Summary**

---

- Manage the water resources of the Flint River Basin such that they are sustainable and consistent with the public welfare.

Development of the Plan included policy recommendations made by a Stakeholder Advisory Committee (SAC); several, but not all, of these recommendations were incorporated into the final Plan. The SAC consisted of farmers and agribusiness representatives, the Southwest Georgia Water Task Force, Flint River Regional Water Council, local elected officials, municipal authority and/or utility representatives, recreational advocates, the Georgia Conservancy, League of Conservation Voters, and others. The SAC worked with a Technical Advisory Committee (TAC) which consisted of experts well versed in the water resources, geology, and agricultural systems of the Flint River Basin. The SAC partnered with EPD in shaping a plan based upon evaluation of technical data, existing EPD regulatory limits, and ground- and surface water modeling results that would protect existing permitted users and the water resource.

The goal of the Plan was to achieve a balance between the long-term sustainability of the environment and the economic viability of farmers in the region. The Plan provides a scientific and policy foundation for water resources planning in the Flint River Basin and will be implemented in concert with the Regional Water Plans of the Lower Flint-Ochlockonee and Upper Flint Councils.

### **A. Background**

The circumstances leading to the initiation of the Plan in October of 1999 were as follows:

- The worst drought in Georgia since the mid 1950s began in May 1998. Before the drought years of 1998–2002 took their toll, Georgians had experienced relatively infrequent and mild drought conditions from the 1960s through the 1990s. Long-term climate records however, indicate drought durations of two or more years are likely to occur, on average, one in every 25 years (Stooksbury, 2003).

The compounding effects of irrigation and drought are cited in the Plan. These effects include more frequent and prolonged periods when low flow criteria established by the

Georgia Environmental Protection Division  
Lower Flint-Ochlockonee Council  
**Existing Regulatory and Local Plan Summary**

---

U.S. Fish and Wildlife Service (USFWS) are not met for certain segments of the Flint River and its tributaries;

- Two years preceding the drought USGS Open-File Report 95-321 (1996) was published. The report was undertaken to better understand groundwater availability and its relation to surface water in the lower portion of the Apalachicola-Chattahoochee-Flint River Basin, particularly Subarea 4 of the Flint River Basin. Quantitative models were developed to predict current and future groundwater withdrawals and the affects to surface water flow during drought conditions. The USGS model indicated that under extreme drought conditions and increased irrigation the Flint River could cease to flow in some sub-basins.

In other sub-basins, Floridan aquifer withdrawals showed limited to no effect on stream flow conditions during drought conditions. In the Plan, EPD concludes that groundwater withdrawals in some small watersheds are attributed with having the greatest impact on stream flows outside of direct surface water withdrawals. The primary USGS HUC-8 designated watersheds identified as having the greatest impact include portions of the Ichawaynochaway Creek sub-basin, Spring Creek sub-basin, and Lower Flint River sub-basin.

- Agricultural permit applications within the lower Flint Basin began to rise at an accelerated pace in response to concerns of a pending moratorium on permit issuance.

EPD announced the moratorium on issuance of new agricultural water use permits for Floridan aquifer withdrawals in Subarea 4 and for all surface water withdrawals within the Flint River Basin on December 1, 1999. The moratorium lasted through March 17, 2006 after which a backlog of permit applications (1,134 permit applications in total accounting for irrigation of an additional 96,219 acres) began to be reviewed against the criteria set forth in the Plan.

The Georgia General Assembly enacted the Flint River Drought Protection Act (O.C.G.A. 12-5-540) amid the drought years of 1999-2000. The Georgia rules and regulations promulgated by the Act were drafted concurrently with the Plan under Chapter 391-3-28 with the latest revision adopted on June 23, 2006. The rules provide for an incentive based program by which lands

Georgia Environmental Protection Division  
Lower Flint-Ochlockonee Council  
**Existing Regulatory and Local Plan Summary**

---

irrigated from aquifers or streams directly impacting flows of the Flint River be voluntarily discontinued by farmers by means of an irrigation reduction auction during prescribed drought conditions.

The Director of the EPD is responsible for issuing a severe drought declaration on or before March 1<sup>st</sup> of each year. A severe drought declaration is to be followed by the determination of the extent of acreage on which irrigation should be suspended. Then, an irrigation suspension auction is held (funding permitting), and eligible agricultural permit holders can submit per acre bids to suspend irrigation on acreage they identify. The Director has the purview to set a cap on the bid amount during the process. An auction may continue iteratively through March 22 of the announced severe drought year. The Director is authorized to enact non-voluntary irrigation acreage reductions if the total acreage voluntarily suspended through the auction process is less than the pre-determined objective. Permittees are compensated based upon the average auction price in such circumstances.

## **B. Summary**

Permitting and water resource management actions as summarized in the Plan are presented below.

- The moratorium on the issuance of agricultural permits within the Flint River Basin was lifted upon approval of the final Plan;
- USGS HUC-12 watersheds within Subarea 4 of the Flint River Basin have been categorized based upon the compounded impacts of permitted irrigation withdrawal quantities and severe drought conditions as modeled in the USGS and EPD hydrologic models. These categories are described in terms of baseflow reduction to the Flint River and are summarized in Table III-1;

Georgia Environmental Protection Division  
 Lower Flint-Ochlockonee Council  
**Existing Regulatory and Local Plan Summary**

| <b>Table III-1. Use Area Designation</b> |  |                             |                               |
|--|--|-----------------------------|-------------------------------|
| <b>Area Designation / Sub-basin</b>      | <b>CAPACITY USE AREAS</b>                      | <b>RESTRICTED USE AREAS</b> | <b>CONSERVATION USE AREAS</b> |
|  | <b>MODELED BASEFLOW REDUCTION <sup>1</sup></b> |                             |                               |
| Spring Creek                             | > 5  | 1 – 5                       | < 1                           |
| Ichawaynochaway Creek                    | >10  | 1 – 10                      | < 1                           |
| Lower Flint River                        | > 30   | 3 – 30                      | < 3                           |

1. All values shown are in cubic feet per second.  
 2. These values may change over time as irrigation amounts and patterns change and/or as models are updated.

- USGS HUC-8 watersheds serve as the largest hydrologic units on which water management and permitting decisions are based. Where applicable USGS HUC-12 watershed scales can be also be used;
- The USGS HUC 8 watersheds within the Flint River Basin include: Upper Flint, Middle Flint, Kinchafoonee-Muckalee Creeks, Lower Flint, Ichawaynochaway Creek, and Spring Creek;
- Permit applicants are required to submit proof of ownership or lease of land and latitude/longitude coordinates of proposed well or surface water pumps;
- Permit applications are evaluated for potential impacts to stream flows, impacts to existing permitted users, overlapping radii of influence of adjacent permitted wellheads and proximity to existing users;
- Conservation measures are conditional to all permits issued after January 1, 2006;
- Standard low flow protection plans are standard conditions for newly issued surface water withdrawals within the Spring Creek and Ichawaynochaway sub-basins;
- Use of conservation measures and innovative irrigation technologies are taken into consideration as means of extending irrigation use as long as possible into times of severe drought conditions;
- Permit applicants location of proposed withdrawal, proposed pump capacity, date of application, and date of letter of concurrence are disclosed to the public via internet;

Georgia Environmental Protection Division  
Lower Flint-Ochlockonee Council  
**Existing Regulatory and Local Plan Summary**

---

- Duplicate permits are revoked by EPD. A 30-day appeal period is provided to revoked applicants; and
- The Plan is to be renewed every 3-years to account to reflect additional modeling, ecological, legal, and miscellaneous data.

#### **IV. ATTACHMENTS**

Tables as previously described are attached to this technical memorandum in the pages that follow. The tables include the following:

- Table A-1. 305(b)/303(d) Listed Streams
- Table A-2. 305(b)/303(d) Listed Lakes
- Table A-3. Southwest Georgia Regional Commission – Review of Local Comprehensive Plans, Water Resource BMPs
- Table A-4. State and Federally Protected Aquatic Species Specific to the Lower Flint-Ochlockonee Water Planning Region
- Table A-5. High Priority Waters for Protecting Aquatic Biodiversity in the Lower Flint-Ochlockonee Water Planning Region
- Lower Flint-Ochlockonee Council Letter of Support for Golden Triangle RC&D's 319(h) Project in Spring Creek Watershed
  - Project Summary from Section 319(h) Grant Application: Addressing Unpaved Road Issues in the Spring Creek Watershed/ Lower Flint-Ochlockonee Water Council Area

Georgia Environmental Protection Division  
 Lower Flint-Ochlockonee Council  
**Existing Regulatory and Local Plan Summary**

| <b>Table A-1. 305(b)/303(d) Listed Streams</b> |                                |                                 |   |                          |                                      |                                 |                                   |            |                    |   |
|--|--------------------------------|---------------------------------|---|--------------------------|--------------------------------------|---------------------------------|-----------------------------------|------------|--------------------|---|
| <i>Stream Data</i>                             |                                |                                 |   |                          | <i>305(b)/303(d) &amp; TMDL Data</i> |                                 |                                   |            |                    |   |
| HUC 12   | Reach Name                     | County                          | Location Description                                    | Stream Extension (miles) | 303(b)/303(d) Assessment Category    | Criterion Violated <sup>1</sup> | Potential Cause Code <sup>2</sup> | Water Use  | Evaluation         | TMDL Implementation Plan -OR- Priority Year |
| <b>Chattahoochee River Basin</b>               |                                |                                 |   |                          |                                      |                                 |                                   |            |                    |   |
| 031300040501                                   | Chattahoochee River            | Clay/ Early                     | D/S Fort Gaines to Lake Andrews                         | 16                       | 1                                    | -                               | -                                 | Fishing    | Supporting         | -   |
| 031300040502                                   | Coheelee Creek                 | Early                           | Chancy Mill Creek to Chattahoochee River                | 5                        | 4a                                   | Bio F                           | NP                                | Fishing    | Not Supporting     | 2004  |
| 031300040503                                   | Odum Creek                     | Early                           | Headwaters to Chattahoochee River                       | 4                        | 3                                    |                                 |                                   | Fishing    | Assessment Pending |   |
| 031300040703                                   | Sawhatchee Creek               | Early                           | Weaver Creek to Sheffield Mill Creek                    | 2                        | 1                                    | -                               | -                                 | Fishing    | Supporting         | -   |
| 031300040704                                   | Weaver Creek                   | Early                           | Headwaters to Sawhatchee Creek                          | 5                        | 4a                                   | Bio F                           | NP                                | Fishing    | Not Supporting     | 2004  |
| 031300040705                                   | Chattahoochee River            | Early/ Seminole                 | Lake Andrews Lock & Dam to U.S. Hwy. 84                 | 11                       | 1                                    | -                               | -                                 | Fishing    | Supporting         | -   |
| 031300040706                                   | Kirkland Creek                 | Early                           | Dry Creek to Chattahoochee River                        | 4                        | 1                                    | -                               | -                                 | Fishing    | Supporting         | -   |
| 031300040707                                   | Sawhatchee Creek               | Early                           | Headwaters to Weaver Creek                              | 9                        | 1                                    | -                               | -                                 | Fishing    | Supporting         | -   |
| 031300040801                                   | Chattahoochee River            | Early/ Seminole                 | U.S. Hwy. 84 to Lake Seminole                           | 17                       | 1                                    | -                               | -                                 | Recreation | Supporting         | -   |
| <b>Flint River Basin</b>                       |                                |                                 |   |                          |                                      |                                 |                                   |            |                    |   |
| 031300060701                                   | Chokee Creek                   | Lee                             | Mill Creek to Flint River                               | 6                        | 1                                    | -                               | -                                 | Fishing    | Supporting         | -   |
| 031300060902                                   | Mercer Mill Creek (Mill Creek) | Worth                           | Boy Scout Road to Flint River                           | 7                        | 4a                                   | Bio F                           | NP                                | Fishing    | Not Supporting     | 2004  |
| 031300070401                                   | Bear Creek                     | Terrell                         | Long Branch to Reedy Creek                              | 9                        | 1                                    | -                               | -                                 | Fishing    | Supporting         | -   |
| 031300070402                                   | Tributary to Bear Creek        | Terrell/ Webster                | Headwaters to Bear Creek                                | 3                        | 5                                    | Bio M                           | NP                                | Fishing    | Not Supporting     | 2017  |
| 031300070501                                   | Chokeelagee Creek              | Lee                             | Headwaters to Kinchafoonee Creek                        | 10                       | 1                                    | -                               | -                                 | Fishing    | Supporting         | -   |
| 031300070602                                   | Middle Creek                   | Terrell                         | Headwaters to Kinchafoonee Creek                        | 8                        | 4a                                   | Bio F                           | NP                                | Fishing    | Not Supporting     | 2004  |
| 031300070603                                   | Fowltown Creek                 | Lee                             | D/S Armena Rd. To Kinchafoonee Creek                    | 6                        | 4a                                   | FC                              | NP                                | Fishing    | Not Supporting     | 2004  |
| 031300070604                                   | Kinchafoonee Creek             | Terrell/ Sumter/ Lee/ Dougherty | Ga. Hwy. 45 (Webster Co. Line) to Lake Chehaw/Worth     | 40                       | 1                                    | -                               | -                                 | Fishing    | Supporting         | -   |
| 031300070902                                   | Muckaloochee Creek             | Lee                             | Smithville Pond [aka Wells Mill Pond] to Muckalee Creek | 10                       | 4a                                   | FC                              | M, NP                             | Fishing    | Not Supporting     | 2004  |

Georgia Environmental Protection Division  
 Lower Flint-Ochlockonee Council  
**Existing Regulatory and Local Plan Summary**

| <b>Table A-1. 305(b)/303(d) Listed Streams</b> |                             |                                  |   |                                 |  |                                       |   |                  |                    |  |
|--|-----------------------------|----------------------------------|---|---------------------------------|--|---------------------------------------|---|------------------|--------------------|--|
| <i>Stream Data</i>                             |                             |                                  |   |                                 | <i>305(b)/303(d) &amp; TMDL Data</i>     |                                       |   |                  |                    |  |
| <b>HUC 12</b>                                  | <b>Reach Name</b>           | <b>County</b>                    | <b>Location Description</b>                   | <b>Stream Extension (miles)</b> | <b>303(b)/303(d) Assessment Category</b> | <b>Criterion Violated<sup>1</sup></b> | <b>Potential Cause Code<sup>2</sup></b> | <b>Water Use</b> | <b>Evaluation</b>  | <b>TMDL Implementation Plan -OR- Priority Year</b> |
| 031300071001                                   | Muckalee Creek              | Lee                              | Sumter Co. Line to Pirates Cove Rd., Leesburg | 20                              | 1  | -                                     | -                                       | Fishing          | Supporting         | -  |
| 031300080101                                   | Flint River                 | Dougherty/<br>Mitchell           | Muckafoonee Creek to Raccoon Creek            | 23                              | 1  | -                                     | -                                       | Fishing          | Supporting         | -  |
| 031300080103                                   | Tributary to Flint River    | Dougherty                        | Headwaters to Flint River                     | 6                               | 3  |                                       |   | Fishing          | Assessment Pending |  |
| 031300080301                                   | Cooleewahee Creek           | Dougherty/<br>Baker              | Piney Woods Branch to Flint River near Newton | 16                              | 4a                                       | FC, Bio F                             | NP                                      | Fishing          | Not Supporting     | 2004   |
| 031300080401                                   | Flint River                 | Mitchell                         | Raccoon Creek to Ichawaynochaway Creek        | 28                              | 1  | -                                     | -                                       | Fishing          | Supporting         | -  |
| 031300080501                                   | Big Slough                  | Mitchell                         | Near Pelham                                   | 4                               | 4a                                       | DO, FC                                | UR                                      | Fishing          | Not Supporting     | 2004   |
| 031300080601                                   | Big Slough                  | Decatur                          | Bainbridge                                    | 5                               | 1  | -                                     | -                                       | Fishing          | Supporting         | -  |
| 031300080801                                   | Flint River                 | Decatur                          | Big Slough to 1 mi. downstream State docks    | 5                               | 1  | -                                     | -                                       | Fishing          | Supporting         | -  |
| 031300080802                                   | Fourmile Creek              | Decatur                          | Headwaters to Spring Creek                    | 4                               | 1  | -                                     | -                                       | Fishing          | Supporting         | -  |
| 031300090101                                   | Wolf Creek                  | Terrell                          | Headwaters to Ichawaynochaway Creek           | 9                               | 4a                                       | Bio F                                 | NP                                      | Fishing          | Not Supporting     | 2004   |
| 031300090102                                   | Ichawaynochaway Creek       | Terrell/<br>Randolph             | Wolf Creek to Little Ichawaynochaway Creek    | 1                               | 1  | -                                     | -                                       | Fishing          | Supporting         | -  |
| 031300090301                                   | Ichawaynochaway Creek       | Terrell/<br>Randolph/<br>Calhoun | Walk Ikey Creek to Falling Creek              | 7                               | 1  | -                                     | -                                       | Fishing          | Supporting         | -  |
| 031300090501                                   | Pachitla Creek              | Calhoun                          | Parkins Creek to Bay Branch near Edison       | 5                               | 1  | -                                     | -                                       | Fishing          | Supporting         | -  |
| 031300090502                                   | Little Pachitla Creek       | Calhoun                          | Fellows Branch to Bear Creek                  | 7                               | 1  | -                                     | -                                       | Fishing          | Supporting         | -  |
| 031300090503                                   | Tributary to Pachitla Creek | Calhoun                          | Headwaters to Pachitla Creek                  | 1                               | 3  |                                       |   | Fishing          | Assessment Pending |  |
| 031300090601                                   | Ichawaynochaway Creek       | Baker                            | Calhoun Co. Line to Flint River               | 35                              | 1  | -                                     | -                                       | Fishing          | Supporting         | -  |
| 031300090701                                   | Brantley Creek              | Terrell                          | Downstream Dawson WPCP                        | 2                               | 3  |                                       |   | Fishing          | Assessment Pending |  |



Georgia Environmental Protection Division  
 Lower Flint-Ochlockonee Council  
**Existing Regulatory and Local Plan Summary**

| <b>Table A-1. 305(b)/303(d) Listed Streams</b> |                                     |                       |   |                                 |  |                                       |   |                  |                    |  |
|--|-------------------------------------|-----------------------|---|---------------------------------|--|---------------------------------------|---|------------------|--------------------|--|
| <i>Stream Data</i>                             |                                     |                       |   |                                 | <i>305(b)/303(d) &amp; TMDL Data</i>     |                                       |   |                  |                    |  |
| <b>HUC 12</b>                                  | <b>Reach Name</b>                   | <b>County</b>         | <b>Location Description</b>                           | <b>Stream Extension (miles)</b> | <b>303(b)/303(d) Assessment Category</b> | <b>Criterion Violated<sup>1</sup></b> | <b>Potential Cause Code<sup>2</sup></b> | <b>Water Use</b> | <b>Evaluation</b>  | <b>TMDL Implementation Plan -OR- Priority Year</b> |
| 031300090702                                   | Chickasawhatchee Creek              | Dougherty             | Dougherty County                                      | 12                              | 1  | -                                     | -                                       | Fishing          | Supporting         | -  |
| 031300090703                                   | Chickasawhatchee Creek              | Terrell               | Brantley Creek to Herod Creek                         | 4                               | 1  | -                                     | -                                       | Fishing          | Supporting         | -  |
| 031300090704                                   | Brantley Creek                      | Terrell               | 2 miles d/s Dawson WPCP to Chickasawhatchee Creek     | 4                               | 1  | -                                     | -                                       | Fishing          | Supporting         | -  |
| 031300090705                                   | Tributary to Chickasawhatchee Creek | Calhoun               | Headwaters to Chickasawhatchee Creek                  | 4                               | 3  |                                       |   | Fishing          | Assessment Pending |  |
| 031300090801                                   | Kiokee Creek                        | Dougherty             | Mud Creek to Hwy 62                                   | 3                               | 1  | -                                     | -                                       | Fishing          | Supporting         | -  |
| 031300090802                                   | Kiokee Creek                        | Terrell/<br>Dougherty | Headwaters to Tallahassee Creek                       | 7                               | 3  |                                       |   | Fishing          | Assessment Pending |  |
| 031300090901                                   | Keel Creek                          | Calhoun/<br>Baker     | Headwaters to Chickasawhatchee Creek                  | 6                               | 3  |                                       |   | Fishing          | Assessment Pending |  |
| 031300091001                                   | Big Cypress Creek                   | Baker                 | Upstream Ichawaynochaway Creek, Near Newton           | 6                               | 1  | -                                     | -                                       | Fishing          | Supporting         | -  |
| 031300091002                                   | Chickasawhatchee Creek              | Baker                 | Dougherty Co. Line to Ichawaynotchaway Creek, Elmodel | 10                              | 1  | -                                     | -                                       | Fishing          | Supporting         | -  |
| 031300100201                                   | Baptist Branch                      | Early                 | Downstream Blakely                                    | 2                               | 4a                                       | Bio F                                 | UR                                      | Fishing          | Not Supporting     | 2004   |
| 031300100202                                   | Dry Creek                           | Early                 | Headwaters, d/s Blakely, to Spring Creek              | 12                              | 4a                                       | DO                                    | UR                                      | Fishing          | Not Supporting     | 2004   |
| 031300100401                                   | Cypress Creek                       | Miller                | U/S Aycocks Creek near Colquitt                       | 4                               | 1  | -                                     | -                                       | Fishing          | Supporting         | -  |
| 031300100402                                   | Aycocks Creek                       | Miller                | Kaney Head Creek to Spring Creek                      | 15                              | 4a                                       | FC                                    | NP                                      | Fishing          | Not Supporting     | 2001   |
| 031300100501                                   | Big Drain Creek                     | Early                 | U/S Spring Creek, Boykin                              | 2                               | 1  | -                                     | -                                       | Fishing          | Supporting         | -  |
| 031300100601                                   | Tributary to Dry Creek              | Miller                | Headwaters to Dry Creek                               | 5                               | 3  |                                       |   | Fishing          | Assessment Pending |  |
| 031300100702                                   | Spring Creek                        | Early/ Miller         | SR62 near Arlington to Aycocks Creek                  | 22                              | 4a                                       | DO, Bio F                             | UR                                      | Fishing          | Not Supporting     | ?  |
| 031300100703                                   | Spring Creek                        | Decatur               | Aycocks Creek to Lake Seminole                        | 15                              | 5  | TWR                                   | NP                                      | Fishing          | Not Supporting     | ?  |
| 031300100801                                   | Fish Pond Drain                     | Seminole              | U.S. Hwy. 84, Donalsonville to Wash Pond              | 7                               | 4a                                       | FC, DO                                | UR                                      | Fishing          | Not Supporting     | 2001 (FC),<br>2004 (DO)                            |

Georgia Environmental Protection Division  
 Lower Flint-Ochlockonee Council  
**Existing Regulatory and Local Plan Summary**

| <b>Table A-1. 305(b)/303(d) Listed Streams</b> |                              |                 |  |                          |                                      |                                 |                                   |           |                    |   |
|--|------------------------------|-----------------|--|--------------------------|--------------------------------------|---------------------------------|-----------------------------------|-----------|--------------------|---|
| <i>Stream Data</i>                             |                              |                 |  |                          | <i>305(b)/303(d) &amp; TMDL Data</i> |                                 |                                   |           |                    |   |
| HUC 12   | Reach Name                   | County          | Location Description   | Stream Extension (miles) | 303(b)/303(d) Assessment Category    | Criterion Violated <sup>1</sup> | Potential Cause Code <sup>2</sup> | Water Use | Evaluation         | TMDL Implementation Plan -OR- Priority Year |
| 031300100802                                   | Tributary to Fish Pond Drain | Early/Seminole  | Headwaters to Fish Pond Drain  | 6                        | 3                                    |                                 |                                   | Fishing   | Assessment Pending |   |
| 031300110201                                   | North Mosquito Creek         | Decatur         | Florida State Line to Mosquito Creek   | 7                        | 1                                    | -                               | -                                 | Fishing   | Supporting         | -   |
| <b>Ochlockonee River Basin</b>                 |                              |                 |  |                          |                                      |                                 |                                   |           |                    |   |
| 031101030101                                   | Olive Creek                  | Thomas          | Headwaters to upstream U.S. Hwy. 19, Thomasville                                 | 3                        | 4a                                   | DO, FC                          | UR                                | Fishing   | Not Supporting     | 2002  |
| 031101030102                                   | Aucilla River                | Thomas          | Masse Branch to Brooks County line near Boston                                   | 10                       | 4a                                   | DO, FC                          | NP                                | Fishing   | Not Supporting     | 2002  |
| 031101030103                                   | Olive Creek                  | Thomas          | Headwaters to Aucilla River  | 7                        | 3                                    |                                 |                                   | Fishing   | Assessment Pending |   |
| 031101030201                                   | Connell Creek                | Thomas          | Headwaters to Aucilla River  | 10                       | 5                                    | Bio M                           | NP                                | Fishing   | Not Supporting     | 2015  |
| 031200010101                                   | Wards Creek                  | Thomas          | Pine Cr. to McKeever Slough E. of Metcalf  | 3                        | 4a                                   | DO                              | NP                                | Fishing   | Not Supporting     | 2002  |
| 031200020102                                   | Little Creek                 | Colquitt        | Ga. Hwy. 37 to Ochlockonee River near Moultrie                                   | 9                        | 5                                    | FC                              | NP                                | Fishing   | Not Supporting     | 2015  |
| 031200020103                                   | Ochlockonee River            | Colquitt        | D/S Ga. Hwy. 270 to Wolf Pit Branch(d/s Giles Millpond)                          | 7                        | 4a,5                                 | DO, FC                          | NP                                | Fishing   | Not Supporting     | 2015  |
| 031200020104                                   | Ochlockonee River            | Worth           | Headwaters, upstream Ga. Hwy. 112 near Sylvester to Bay Branch, E. of Bridgeboro | 8                        | 4a                                   | FC                              | NP                                | Fishing   | Not Supporting     | 2002  |
| 031200020105                                   | Ochlockonee River            | Colquitt/Thomas | SR 37 downstream Moultrie to Bridge Creek  | 14                       | 4a                                   | FCG(Hg)                         | NP, M                             | Fishing   | Not Supporting     | 2002  |
| 031200020201                                   | Bridge Creek                 | Colquitt/Thomas | Upstream Ga. Hwy. 111 near Moultrie to Ochlockonee River                         | 10                       | 1                                    | -                               | -                                 | Fishing   | Supporting         | -   |
| 031200020202                                   | Bridge Creek                 | Colquitt        | Mill Cr. to upstream Ga. Hwy. 111 near Moultrie                                  | 7                        | 4a                                   | FC                              | NP                                | Fishing   | Not Supporting     | 2002  |
| 031200020302                                   | Big Creek                    | Thomas          | Woodhaven Rd. E. of Coolidge to Ochlockonee River                                | 12                       | 4a                                   | DO, FC                          | NP                                | Fishing   | Not Supporting     | 2002  |
| 031200020401                                   | Little Ochlockonee River     | Thomas          | Big Cr. to Ochlockonee River near Ochlocknee                                     | 9                        | 1                                    | -                               | -                                 | Fishing   | Supporting         | -   |

Georgia Environmental Protection Division  
 Lower Flint-Ochlockonee Council  
**Existing Regulatory and Local Plan Summary**

| <b>Table A-1. 305(b)/303(d) Listed Streams</b> |                                   |                   |   |                          |                                      |                                 |                                   |           |                    |   |
|--|-----------------------------------|-------------------|---|--------------------------|--------------------------------------|---------------------------------|-----------------------------------|-----------|--------------------|---|
| <i>Stream Data</i>                             |                                   |                   |   |                          | <i>305(b)/303(d) &amp; TMDL Data</i> |                                 |                                   |           |                    |   |
| HUC 12   | Reach Name                        | County            | Location Description  | Stream Extension (miles) | 303(b)/303(d) Assessment Category    | Criterion Violated <sup>1</sup> | Potential Cause Code <sup>2</sup> | Water Use | Evaluation         | TMDL Implementation Plan -OR- Priority Year |
| 031200020402                                   | Big Creek                         | Mitchell/Thomas   | Headwaters to Little Cr. near Meigs                             | 12                       | 4a                                   | FC                              | NP                                | Fishing   | Not Supporting     | 2002  |
| 031200020403                                   | Lost Creek                        | Mitchell/Colquitt | Upstream Ga. Hwy. 93 N.E. of Cotton to Little Ochlockonee River | 9                        | 4a                                   | FC                              | NP                                | Fishing   | Not Supporting     | 2002  |
| 031200020404                                   | Little Ochlockonee River          | Colquitt          | Slocumb Branch to downstream SR 111 near Moultrie               | 9                        | 4a                                   | FC                              | NP                                | Fishing   | Not Supporting     | 2002  |
| 031200020501                                   | Barnetts Creek                    | Thomas/Grady      | West Branch to Ochlockonee River, W. of Thomasville             | 8                        | 1                                    | -                               | -                                 | Fishing   | Supporting         | -   |
| 031200020502                                   | E. Br. Barnetts Creek             | Thomas            | Horse Cr. to Barnetts Cr. near Ochlockonee                      | 3                        | 5                                    | FC                              | NP                                | Fishing   | Not Supporting     | 2015  |
| 031200020601                                   | Oquina Creek                      | Thomas            | Bruces Branch to Cassidy Rd., Thomasville                       | 2                        | 4a                                   | FC                              | UR                                | Fishing   | Not Supporting     | 2002  |
| 031200020701                                   | Ochlockonee River                 | Thomas            | Bridge Cr. to Oquina Creek                                      | 16                       | 4a                                   | TWR                             | NP                                | Fishing   | Not Supporting     | ?   |
| 031200020801                                   | Parkers Mill Creek                | Grady             | Headwaters to Tired Cr., Cairo                                  | 5                        | 4a                                   | FC                              | M                                 | Fishing   | Not Supporting     | 2002  |
| 031200020802                                   | Little Tired Creek                | Grady             | SR188 downstream Cairo to Tired Cr.                             | 6                        | 4a                                   | FC                              | UR                                | Fishing   | Not Supporting     | 2002  |
| 031200020803                                   | Tired Creek                       | Grady             | Wolf Cr. to Parkers Mill Cr. near Cairo                         | 4                        | 1                                    | -                               | -                                 | Fishing   | Supporting         | -   |
| 031200020804                                   | Tired Creek                       | Grady             | Turkey Cr. to Ochlockonee River                                 | 6                        | 4a                                   | FC, Bio M                       | NP                                | Fishing   | Not Supporting     | 2002  |
| 031200030101                                   | Ochlockonee River                 | Thomas/Grady      | Oquina Creek to Stateline                                       | 33                       | 4a                                   | FCG(Hg)                         | NP                                | Fishing   | Not Supporting     | 2002  |
| 031200030102                                   | Hadley Creek                      | Grady             | Headwaters to Ochlockonee River                                 | 4                        | 1                                    | -                               | -                                 | Fishing   | Supporting         | -   |
| 031200030201                                   | Swamp Creek                       | Decatur           | SR 262 to Stateline   | 4                        | 4a                                   | FC                              | NP                                | Fishing   | Not Supporting     | 2002  |
| 031200030202                                   | Little Attapulgus Creek           | Decatur           | Downstream Crescent Lake to Attapulgus Creek                    | 4                        | 4a                                   | FC                              | NP                                | Fishing   | Not Supporting     | 2002  |
| 031200030203                                   | Attapulgus Creek                  | Decatur           | Callahan Br. to Little Attapulgus Cr.                           | 8                        | 4a                                   | FC                              | NP                                | Fishing   | Not Supporting     | 2002  |
| 031200030204                                   | Callahan Branch                   | Decatur           | Headwaters to Attapulgus Creek                                  | 4                        | 1                                    | -                               | -                                 | Fishing   | Supporting         | -   |
| 031200030205                                   | Tributary to Willacoochee Creek   | Decatur           | Headwaters to Willacoochee Creek                                | 6                        | 3                                    |                                 |                                   | Fishing   | Assessment Pending |   |
| <b>Suwannee River Basin</b>                    |                                   |                   |   |                          |                                      |                                 |                                   |           |                    |   |
| 031102020205                                   | Tributary to West Fork Deep Creek | Crisp/ Turner     | Headwaters to West Fork Deep Creek                              | 3                        | 3                                    |                                 |                                   | Fishing   | Assessment Pending |   |

Georgia Environmental Protection Division  
 Lower Flint-Ochlockonee Council  
**Existing Regulatory and Local Plan Summary**

| <b>Table A-1. 305(b)/303(d) Listed Streams</b> |                |                      |  |                          |                                      |                                 |                                   |           |                    |   |
|--|----------------|----------------------|--|--------------------------|--------------------------------------|---------------------------------|-----------------------------------|-----------|--------------------|---|
| <i>Stream Data</i>                             |                |                      |  |                          | <i>305(b)/303(d) &amp; TMDL Data</i> |                                 |                                   |           |                    |   |
| HUC 12   | Reach Name     | County               | Location Description                           | Stream Extension (miles) | 303(b)/303(d) Assessment Category    | Criterion Violated <sup>1</sup> | Potential Cause Code <sup>2</sup> | Water Use | Evaluation         | TMDL Implementation Plan -OR- Priority Year |
| 031102020206                                   | Deep Creek     | Crisp                | Headwaters to Red Oak Creek                    | 4                        | 3                                    |                                 |                                   | Fishing   | Assessment Pending |   |
| 031102020207                                   | Red Oak Creek  | Crisp                | Headwaters to Deep Creek                       | 12                       | 5                                    | Bio M                           | NP                                | Fishing   | Not Supporting     | 2015  |
| 031102030501                                   | Okapilco Creek | Colquitt             | SR 37 to Hog Cr., S. of Moultrie               | 10                       | 4a,5                                 | DO, FC                          | UR                                | Fishing   | Not Supporting     | 2015  |
| 031102030502                                   | Okapilco Creek | Colquitt             | Upstream SR S1540 to U.S. Hwy. 319, Moultrie   | 10                       | 5                                    | FC                              | NP                                | Fishing   | Not Supporting     | 2015  |
| 031102040105                                   | Little River   | Tift/ Colquitt/ Cook | Big Branch to Warrior Creek                    | 24                       | 1                                    | -                               | -                                 | Fishing   | Supporting         | -   |
| 031102040201                                   | Ty Ty Creek    | Colquitt             | Tucker Cr. to Warrior Cr. near Omega           | 9                        | 4a                                   | DO                              | NP                                | Fishing   | Not Supporting     | 2002  |
| 031102040202                                   | Ty Ty Creek    | Worth/ Tift          | Little Cr. near Ty Ty to Tucker Cr. near Omega | 10                       | 4a                                   | FC                              | NP                                | Fishing   | Not Supporting     | 2002  |
| 031102040301                                   | Warrior Creek  | Colquitt             | Rock Cr. to Ty Ty Cr. near Norman Park         | 8                        | 1                                    | -                               | -                                 | Fishing   | Supporting         | -   |
| 031102040302                                   | Warrior Creek  | Worth/ Colquitt      | Horse Cr. to Rock Cr. near Norman Park         | 10                       | 4a,5                                 | DO, FC                          | NP                                | Fishing   | Not Supporting     | 2002 (DO), 2015 (FC)                        |
| 031102040303                                   | Warrior Creek  | Worth                | Briar Creek to Horse Creek                     | 3                        | 1                                    | -                               | -                                 | Fishing   | Supporting         | -   |
| 031102040304                                   | Horse Creek    | Worth                | Headwaters near Sylvester to Warrior Cr.       | 13                       | 1                                    | -                               | -                                 | Fishing   | Supporting         | -   |
| 031102040305                                   | Town Creek     | Worth                | Headwaters to Warrior Cr. near Sylvester       | 9                        | 4a                                   | DO                              | UR                                | Fishing   | Not Supporting     |   |
| 031102040306                                   | Warrior Creek  | Worth                | Headwaters to Town Creek                       | 12                       | 3                                    |                                 |                                   | Fishing   | Assessment Pending |   |
| 031102040401                                   | Indian Creek   | Colquitt             | Upstream Little River near Berlin              | 4                        | 4a                                   | DO                              | NP                                | Fishing   | Not Supporting     |   |
| 031102040402                                   | Bear Creek     | Colquitt             | Reedy Cr. to Indian Cr. near Berlin            | 7                        | 4a                                   | DO                              | UR                                | Fishing   | Not Supporting     |   |

**Notes:**

- 1.) BioF = Biota Impacted (Fish Community); BioM = Biota Impacted (Macroinvertebrate Community); DO = Dissolved Oxygen; FC = Fecal Coliform; FCG = Fish Consumption Guidance; TWR = Trophic-Weighted Residue Value of mercury in fish tissue exceeding the EPD human health standard of 0.3 mg/kg
- 2.) M = Municipal Facility; NP = Nonpoint Source/Unknown Source; UR = Urban Runoff/Urban Effects

Georgia Environmental Protection Division  
 Lower Flint-Ochlockonee Council  
**Existing Regulatory and Local Plan Summary**

| <b>Table A-2. 305(b)/303(d) Listed Lakes</b> |                     |                         |  |                   |                                      |                                 |                                   |            |                    |   |
|--|---------------------|-------------------------|--|-------------------|--------------------------------------|---------------------------------|-----------------------------------|------------|--------------------|---|
| <i>Lake Data</i>                             |                     |                         |  |                   | <i>305(b)/303(d) &amp; TMDL Data</i> |                                 |                                   |            |                    |   |
| HUC 12                                       | Lake Name           | County                  | Location Description                     | Lake Area (acres) | 303(b)/303(d) Assessment Category    | Criterion Violated <sup>1</sup> | Potential Cause Code <sup>2</sup> | Water Use  | Evaluation         | TMDL Implementation Plan -OR- Priority Year |
| <b>Chattahoochee River Basin</b>             |                     |                         |  |                   |                                      |                                 |                                   |            |                    |   |
| 031300040202                                 | Kolomoki Lake       | Early                   | Kolomoki Mounds State Park, Early County | 57                | 3                                    |                                 |                                   | Fishing    | Assessment Pending |   |
| 031300040203                                 | Yohola Lake         | Early                   | Kolomoki Mounds State Park, Early County | 57                | 3                                    |                                 |                                   | Fishing    | Assessment Pending |   |
| <b>Flint River Basin</b>                     |                     |                         |  |                   |                                      |                                 |                                   |            |                    |   |
| 031300040802                                 | Seminole Lake       | Seminole/Decatur        | Seminole and Decatur Counties            | 37515             | 1                                    | -                               | -                                 | Recreation | Supporting         |   |
| 031300060612                                 | Blackshear Lake     | Crisp/Sumter/Dooly/ Lee | Crisp, Sumter, Lee, Dooly Counties       | 8518              | 1                                    | -                               | -                                 | Recreation | Supporting         |   |
| 031300060903                                 | Worth Lake          | Dougherty               | Flint River Reservoir, Dougherty County  | 1401              | 1                                    | -                               | -                                 | Recreation | Supporting         |   |
| 031300070605                                 | Ken Gardens Lake    | Dougherty               | Dougherty County                         | 4                 | 3                                    |                                 |                                   | Fishing    | Assessment Pending |   |
| <b>Suwannee River Basin</b>                  |                     |                         |  |                   |                                      |                                 |                                   |            |                    |   |
| 031300080102                                 | Albany By-Pass Pond | Dougherty               | Dougherty County                         | 20                | 4a                                   | FCG(DDE /DDD)                   | UR, NP                            | Fishing    | Not Supporting     |   |
| 031102040403                                 | Reed Bingham Lake   | Colquitt/Cook           | Reed Bingham State Park                  | 179               | 5                                    | TWR                             | NP                                | Fishing    | Not Supporting     | 2015  |

**Notes:**

- 1.) FCG = Fish Consumption Guidance; TWR = Trophic-Weighted Residue Value of mercury in fish tissue exceeding the EPD human health standard of 0.3 mg/kg
- 2.) NP = Nonpoint Source/Unknown Source; UR = Urban Runoff/Urban Effects



Georgia Environmental Protection Division  
 Lower Flint-Ochlockonee Council  
**Existing Regulatory and Local Plan Summary**

| <b>Table A-3. Southwest Georgia Regional Commission – Review of Local Comprehensive Plans for Water Quality/Quantity BMPs</b>  |                    |                                     |                      |                       |                              |
|--|--------------------|-------------------------------------|----------------------|-----------------------|------------------------------|
| <b>Short Term Work Program Project</b>   | <b>Fiscal Year</b> | <b>Responsible Party</b>            | <b>Cost Estimate</b> | <b>Funding Source</b> | <b>Type Water Management</b> |
| <b><i>Baker County - LFO</i></b>   |                    |                                     |                      |                       |                              |
| Continue support of Best Management Practices as advocated by Natural Resources agencies, and enforcement of Clean Water Act, Endangered Species Act, environmental ordinances, Soil and Sedimentation Act and related agricultural regulations. | 2007-2011          | County, NRCS, Forestry Service, RDC | N/A                  | Operating Budget      | Water quality                |
| Appoint local representatives, as needed, to attend River Basin Management Plan meetings.  | 2008-2009          | County                              | N/A                  | General Fund          | Water quality                |
| Continue road and drainage projects according to current annual priority list  | 2007-2011          | County, DOT                         | \$1 Million          | County, DOT, Grants   | Water quality                |
| <b><i>Newton</i></b>   |                    |                                     |                      |                       |                              |
| Continue support of Best Management Practices as advocated by Natural Resources agencies, and enforcement of Clean Water Act, Endangered Species Act, environmental ordinances, Soil and Sedimentation Act and related agricultural regulations  | 2007-2011          | County, NRCS, Forestry Service, RDC | N/A                  | Operating Budget      | Water quality                |
| Construct Waste Water Treatment Plan   | 2010, 2011         | City                                | \$3 Million          | Bonds, SPLOST, Loans  | Water quality                |
| Require certification training for new water system operators  | 2010, 2011         | City                                | \$1,000              | Operating Budget      | Water quality                |
| <b><i>Calhoun County - LFO</i></b>   |                    |                                     |                      |                       |                              |
| <b><i>Arlington</i></b>  |                    |                                     |                      |                       |                              |
| Update drainage throughout city  | 2010- 2012         | City                                | \$300,000            | CDBG, General Fund    | Water quality                |
| Repair and replace existing sewer lines as indicated   | 2009-2013          | City                                | \$250,000            | CDBG, General Fund    | Water quality                |
| <b><i>Edison</i></b>   |                    |                                     |                      |                       |                              |
| Improve drainage areas.  | 2009-2013          | City                                | \$200,000            | CDBG, General Fund    | Water quality                |
| Provide new water/sewer services in newly developed subdivisions.  | 2009-2013          | City                                | \$200,000            | Grants, General Fund  | Water quality                |
| <b><i>Leary</i></b>  |                    |                                     |                      |                       |                              |
| Improve areas having poor drainage   | 2012-2014          | City                                | \$500,000            | CDBG, General Fund    | Water quality                |
| Make improvements to sewer treatment plant   | 2010-2011          | City                                | \$200,000            | CDBG, General Fund    | Water quality                |
| Extend water mains to un-served areas  | 2009-2013          | City                                | \$200,000            | CDBG, General Fund    | Water quality                |
| <b><i>Morgan</i></b>   |                    |                                     |                      |                       |                              |
| (no recent approved plan)  |                    |                                     |                      |                       |                              |
| <b><i>Colquitt County - LFO</i></b>  |                    |                                     |                      |                       |                              |

Georgia Environmental Protection Division  
 Lower Flint-Ochlockonee Council  
**Existing Regulatory and Local Plan Summary**

| <b>Table A-3. Southwest Georgia Regional Commission – Review of Local Comprehensive Plans for Water Quality/Quantity BMPs</b>                           |                    |                          |                      |  |                                  |
|---|--------------------|--------------------------|----------------------|--|----------------------------------|
| <b>Short Term Work Program Project</b>  | <b>Fiscal Year</b> | <b>Responsible Party</b> | <b>Cost Estimate</b> | <b>Funding Source</b>                          | <b>Type Water Management</b>     |
| <b>Berlin</b>   |                    |                          |                      |  |                                  |
| Provide infrastructure in neighborhoods to improve drainage problems  | 2009-2011          | City                     | \$500,000            | CDBG, Local Funds                              | Water quality                    |
| New Water Tower and well  | 2009-2011          | City                     | \$500,000            | CDBG, Local Funds                              | Water quality                    |
| Upgrade substandard water lines from 2” to 6”/fire hydrants   | 2010, 2012         | City                     | \$300,000            | Local, CDBG                                    | Water quantity                   |
| <b>Doerun</b>   |                    |                          |                      |  |                                  |
| Upgrade wastewater collection system to combat infiltration problems  | 2008-2012          | City                     | \$300,000            | Grants   | Water quality                    |
| Construct new elevated water tank and well  | 2010               | City                     | \$500,000            | City, Grants                                   | Water quality and water quantity |
| Street improvements (curb, gutter, resurface)   | 2008-2012          | City                     | \$185,000            | SPLOST   | Water quality                    |
| <b>Ellenton</b>   |                    |                          |                      |  |                                  |
| Apply for CDBG to develop sanitary sewer systems  | 2008-2012          | City                     | \$500,000            | CDBG, General Funds, GEFA, Loans               | Water quality                    |
| Street repairs and improvements (resurfacing and drainage improvements)<br>Church Street, Peachtree Street  | 2008 – 2012        | City, DOT                | \$300,000            | DOT, LARP Program, General Funds, SPLOST, CDBG | Water quality                    |
| <b>Funston</b>  |                    |                          |                      |  |                                  |
| Make curb and gutter improvements to South Manning, Spivey Drive, and Foy Street, Peachtree Circle, Peachtree Street, Anderson Street, Pitchford Street | 2009               | City                     | \$200,000            | General Funds/SPLOST, CDBG                     | Water quality                    |
| Paint elevated water tank (inside and outside)  | 2011-2012          | City                     | \$60,000             | SPLOST   | Water quality                    |
| Explore resources for well construction   | 2008-2012          | City                     | \$500,000            | CDBG, General Funds                            |                                  |
| <b>Moultrie</b>   |                    |                          |                      |  |                                  |
| Complete watershed assessment and study the development and implementation of storm water management utility  | 2008, 2009, 2010   | City                     | \$100,000            | Water Pollution Control Fund, SPLOST           | Water quality                    |
| Maintain Storm water management project areas   | 2010, 2011, 2012   | City                     | TBD                  | General fund, utility fund                     | Water quality                    |
| Increase sewer capacity   | 2008-2012          | City                     | \$25 million         | SPLOST, Revenue Bonds                          | Water quality                    |
| Expand water service area in parts of the County  | 2008-2012          | City                     | \$1.2 million        | Revenue Bonds                                  | Water quality and water quantity |
| <b>Norman Park</b>  |                    |                          |                      |  |                                  |
| Provide infrastructure improvements in targeted residential areas   | 2009, 2010         | City                     | \$100,000            | General Fund, Grants                           | Water quality and water quantity |
| <b>Decatur County - LFO</b>   |                    |                          |                      |  |                                  |



Georgia Environmental Protection Division  
 Lower Flint-Ochlockonee Council  
**Existing Regulatory and Local Plan Summary**

| <b>Table A-3. Southwest Georgia Regional Commission – Review of Local Comprehensive Plans for Water Quality/Quantity BMPs</b>               |                    |                                       |                      |                       |                                  |
|---|--------------------|---------------------------------------|----------------------|-----------------------|----------------------------------|
| <b>Short Term Work Program Project</b>  | <b>Fiscal Year</b> | <b>Responsible Party</b>              | <b>Cost Estimate</b> | <b>Funding Source</b> | <b>Type Water Management</b>     |
| Research feasibility of adopting comprehensive stormwater management ordinances   | 2011               | County                                | N/A                  |                       | Water quality                    |
| Regulate development in floodplains and stormwater management areas   | 2008-2012          | County                                | \$1,000              | GF                    | Water quality                    |
| Limit the density and intensity over groundwater recharge areas   | 2008               | County                                | N/A                  |                       | Water quality                    |
| Protect and expand tree cover in county   | 2008               | County                                | N/A                  |                       | Water quality                    |
| Research the feasibility of enacting ordinances to protect steep slopes   | 2008               | County                                | N/A                  |                       | Water quality                    |
| Enforce soil erosion and sedimentation control ordinances   | 2008               | County                                | N/A                  |                       | Water quality                    |
| Adopt the appropriate Part V environmental ordinances   | 2008               | County                                | N/A                  |                       | Water quality                    |
| <b>Attapulcus</b>   |                    |                                       |                      |                       |                                  |
| Paint water tank  | 2009-2010          | City                                  | \$25,000             | SPLOST/General Funds  | Water quality                    |
| Acquire additional property for water and septic improvements   | 2008-2012          | City                                  | \$25,000             | SPLOST                | Water quality                    |
| Purchase a new water tank as needed   | 2012               | City                                  | \$500,000            | CDBG                  | Water quality and                |
| Develop preliminary drainage improvement study for the City   | 2008-2012          | City                                  | \$10,000             | General Funds         | Water quality                    |
| <b>Bainbridge</b>   |                    |                                       |                      |                       |                                  |
| Purchase new diffusers for treatment plant  | 2008               | City                                  | \$12,000             | General Funds         | Water quality                    |
| Part Time Soil Erosion Position   | 2008- 2009         | City                                  | \$12,000             | General Funds         | Water quality                    |
| Purchase Street Sweeper   | 2008               | City                                  | \$90,000             | General Funds         | Water quality                    |
| Upgrade Sewage Treatment Plant  | 2008               | City                                  | \$1.5 million        | Water and Sewer Funds | Water quality                    |
| Upgrade Sewer Lift Station Pumps  | 2008-2009          | City                                  | \$120,000            | Water and Sewer Funds | Water quality                    |
| <b>Brinson</b>  |                    |                                       |                      |                       |                                  |
| Review, and amend if necessary, the zoning ordinance to ensure that it encourages green space preservation                                  | 2010               | City                                  | N/A                  |                       | Water quality                    |
| <b>Climax</b>   |                    |                                       |                      |                       |                                  |
| Install water pipes city wide   | 2008-2012          | City                                  | \$500,000            | CDBG/SPLOST           | Water quality and water quantity |
| Install city wide surface water drainage system   | 2008-2012          | City                                  | \$500,000            | CDBG/SPLOST           | Water quality                    |
| <b>Albany/Dougherty County - LFO</b>  |                    |                                       |                      |                       |                                  |
| Water system improvements in South Dougherty County due to high nitrates.   | 2009               | Albany Water Gas and Light Commission | \$1.2 million        | SPLOST                | Water quality                    |
| Complete the expansion of the Joshua Road Wastewater Pollution Control Plant to provide sufficient capacity throughout the planning period. | 2009               | Albany Engineering Department         | \$11 million         | SPLOST                | Water quality                    |

Georgia Environmental Protection Division  
 Lower Flint-Ochlockonee Council  
**Existing Regulatory and Local Plan Summary**

| <b>Table A-3. Southwest Georgia Regional Commission – Review of Local Comprehensive Plans for Water Quality/Quantity BMPs</b>                    |                    |   |                      |                       |                              |
|--|--------------------|---|----------------------|-----------------------|------------------------------|
| <b>Short Term Work Program Project</b>   | <b>Fiscal Year</b> | <b>Responsible Party</b>                                | <b>Cost Estimate</b> | <b>Funding Source</b> | <b>Type Water Management</b> |
| Upgrade force main at lift station 4   | 2005-2006          | Albany Engineering Dept.                                | \$255,000            | SPLOST                | Water quality                |
| County Sewer Extensions  | 2010-2015          | County  | \$1 million          | SPLOST                | Water quality                |
| Complete project separating sanitary and storm water sewers. (CSOs).   | 2005-2006          | City of Albany Engineering and Public Works Departments | \$500,000            | To be determined      | Water quality                |
| Holloway Storm Drainage I, II, II, IV & V  | 2005-2006          | City of Albany Engineering and Public Works Departments | \$6.46 million       | SPLOST                | Water quality                |
| Adopt and implement a stormwater management plan for Albany and Dougherty County. (Currently in study)   | 2005-2006          | City of Albany Engineering and Public Works Departments | To be determined     | To be determined      | Water quality                |
| Storm Drainage control (per DCED), as indicated in the East Albany Urban Redevelopment Plan.   | 2009               | City of Albany Public Works Dept.                       | \$100,000            | SPLOST III and IV     | Water quality                |
| Completion of stormwater drainage system construction west of Westtown Road to alleviate flooding at the corner of Westtown and Industry Avenue. | 2005-2006          | City of Albany Engineering Department                   | \$6.46 million       | SPLOST                | Water quality                |
| <b>Early County - LFO</b>  |                    |   |                      |                       |                              |
| None   |                    |   |                      |                       |                              |
| <b>Blakely</b>   |                    |   |                      |                       |                              |
| Inventory/map environmentally sensitive areas  | 2009-2010          | City  | \$\$                 | Grants General Funds  | Water quality                |
| <b>Damascus</b>  |                    |   |                      |                       |                              |
| Revise ordinances to promote environmentally sensitive site design   | 2009-2010          | City  | \$                   | Grants General Funds  | Water quality                |
| <b>Jakin</b>   |                    |   |                      |                       |                              |
| None   |                    |   |                      |                       |                              |
| <b>Grady County - LFO</b>  |                    |   |                      |                       |                              |

Georgia Environmental Protection Division  
 Lower Flint-Ochlockonee Council  
**Existing Regulatory and Local Plan Summary**

| <b>Table A-3. Southwest Georgia Regional Commission – Review of Local Comprehensive Plans for Water Quality/Quantity BMPs</b>  |                    |   |                      |   |                                  |
|--|--------------------|---|----------------------|---|----------------------------------|
| <b>Short Term Work Program Project</b>   | <b>Fiscal Year</b> | <b>Responsible Party</b>                            | <b>Cost Estimate</b> | <b>Funding Source</b>   | <b>Type Water Management</b>     |
| Support land and soil conservation programs sponsored by the ASCS and SC   | 2007- 2011         | County  | \$                   | Operating Budget  | Water quality                    |
| Encourage agricultural buffers   | 2007- 2011         | County  | \$                   | Operating Budget  | Water quality                    |
| Budget for water distribution maintenance  | 2007- 2011         | County  | \$\$                 | Operating Budget  | Water quality                    |
| Consider development of a well-head protection ordinance   | 2007- 2011         | County  | \$                   | Operating Budget  | Water quality                    |
| Adopt required environmental ordinances: Wetlands, Groundwater recharge  | 2007               | County  | \$                   | Operating Budget  | Water quality                    |
| Continue support of Regional Water Resource Planning Program   | 2007- 2011         | County  | \$                   | Operating Budget  | Water quality                    |
| Promote Water Conservation and Water Quality Initiatives   | 2007- 2011         | County  | \$                   | Operating Budget  | Water quality and water quantity |
| Continue enforcement of erosion and sediment control ordinances  | 2007- 2011         | County  | \$                   | Operating Budget  | Water quality                    |
| Support best management practices of the Soil Conservation Service   | 2007- 2011         | County  | \$                   | Operating Budget  | Water quality                    |
| Continue to monitor development of the River Basin Management Plan and promote river corridor protection measures  | 2007- 2011         | County  | \$                   | Operating Budget  | Water quality                    |
| <b>Cairo</b>   |                    |   |                      |   |                                  |
| Convert LAS Reservoir to Effluent Equalization Pond  | 2007               | City  | \$400,000            | Grants/Loans  | Water quality                    |
| Determine Future Use of Land Application System  | 2008               | City  | \$250,000            | Grants/Loans  | Water quality                    |
| Expand Existing Wastewater Treatment Plant   | 2011               | City  | \$1.5 million        | Grants/Loans  | Water quality                    |
| Construct Water Storage Facility (Elevated Tank) and add well sites  | 2008               | City  | \$1.75 million       | Grants/Loans  | Water quality and water quantity |
| <b>Whigham</b>   |                    |   |                      |   |                                  |
| Adopt required environmental ordinances: wetland, groundwater recharge.  | 2011               | City  | N/A                  |   | Water quality                    |
| Make needed improvements to the municipal water system   | 2008- 2011         | City  | \$1 million          | General Fund/<br>CDBG   | Water quality and water quantity |
| <b>Lee County - LFO</b>  |                    |   |                      |   |                                  |
| Expand the Utilities Authority's water system and plan for the Authority's wastewater system. Maintain and expand Leesburg's and Smithville's water and wastewater system. | 2007-2011          | Lee County  | \$10 million         | General Fund,<br>Utilities Authority<br>Revenue, State and<br>Federal Loans | Water quality and water quantity |
| Ensure future improvements to water and treatment facilities that promotes urban growth and maximizes the use of existing facilities.                                      | 2007-2011          | Lee County,<br>Lee County<br>Utilities<br>Authority | Unknown              | Unknown   | Water quality and water quantity |
| Continue to provide proper treatment and disposal of wastewater.   | 2007-2011          | Lee County,<br>Lee County<br>Utilities<br>Authority | Unknown              | Unknown   | Water quality                    |
| Implement a plan to discourage developments with septic systems and private treatment systems.   | 2007-2011          | Lee County,<br>Lee County                           | Staff Time           | Unknown   | Water quality                    |

Georgia Environmental Protection Division  
 Lower Flint-Ochlockonee Council  
**Existing Regulatory and Local Plan Summary**

| <b>Table A-3. Southwest Georgia Regional Commission – Review of Local Comprehensive Plans for Water Quality/Quantity BMPs</b>  |                    |  |                      |  |                                  |
|--|--------------------|--|----------------------|--|----------------------------------|
| <b>Short Term Work Program Project</b>   | <b>Fiscal Year</b> | <b>Responsible Party</b>                   | <b>Cost Estimate</b> | <b>Funding Source</b>                  | <b>Type Water Management</b>     |
|  |                    | Utilities Authority                        |                      |  |                                  |
| Ensure proper sanitary sewage system practices.  | 2007-2011          | Lee County                                 | Staff Time           | 1% SPLOST, General Fund, State Grants  | Water quality                    |
| Prepare a wetland, groundwater recharge, public water source, and environmentally significant property inventory list and protection plan.   | 2007, 2008         | Lee County                                 | Staff Time           | N/A                                    | Water quality                    |
| Protect and maintain the quality and quantity of groundwater.  | 2007-2011          | Lee County                                 | Staff Time           | N/A                                    | Water quality and water quantity |
| Develop a comprehensive river and creek corridor protection plan.  | 2007-2009          | Lee County                                 | Staff Time           | N/A                                    | Water quality                    |
| Protect and maintain the quality and quantity of wetlands in Lee County.   | 2007-2011          | Lee County                                 | Staff Time           | N/A                                    | Water quality and water quantity |
| Soil management to maintain water quality, flood control, erosion control to maintain good till and soil productivity.   | 2007-2011          | Lee County                                 | Staff Time           | N/A                                    | Water quality                    |
| <b>Leesburg</b>  |                    |  |                      |  |                                  |
| Maintain and expand Leesburg's water and wastewater system.  | 2007-2011          | Leesburg                                   | \$6 Million          | SPLOST, State/Federal Grants           | Water quality and water quantity |
| Implement a plan to protect potable water supplies.  | 2007-2011          | Leesburg                                   | \$50,000             | General Fund/ State Grants             | Water quality and water quantity |
| <b>Smithville</b>  |                    |  |                      |  |                                  |
| Maintain and expand Smithville's water and wastewater system.  | 2007-2011          | Smithville                                 | \$100,000            | General Fund, State/Fed loans & grants | Water quality and water quantity |
| Implement a plan to protect potable water supplies.  | 2007-2011          | Smithville                                 | \$15,000             | General Fund, State Grants             | Water quality and water quantity |
| Continue to provide proper treatment and disposal of waste water.  | 2007-2011          | Smithville, Lee County Utilities Authority | Unknown              | Utilities Authority, State/Fed Grants  | Water quality                    |
| Ensure future improvements to water and treatment facilities that promote urban growth and maximizes the use of existing facilities.   | 2007-2011          | Smithville, Lee County Utilities Authority | Unknown              | Unknown                                | Water quality and water quantity |
| <b>Miller County - LFO</b>   |                    |  |                      |  |                                  |
| Continue clean up and preservation of Spring Creek   | 2007-2011          | City, County, NRCS                         | Unknown              | Unknown                                | Water quality                    |
| Continue support of Best Management Practices as advocated by Natural Resources agencies, and enforcement of Clean Water Act, Endangered Species Act, environmental ordinances, Soil and Sedimentation Act and related ordinances. | 2007-2011          | City, County, NRCS                         | Unknown              | Unknown                                | Water quality                    |

Georgia Environmental Protection Division  
 Lower Flint-Ochlockonee Council  
**Existing Regulatory and Local Plan Summary**

| <b>Table A-3. Southwest Georgia Regional Commission – Review of Local Comprehensive Plans for Water Quality/Quantity BMPs</b>  |                    |                          |                      |                                 |                                  |
|--|--------------------|--------------------------|----------------------|---------------------------------|----------------------------------|
| <b>Short Term Work Program Project</b>   | <b>Fiscal Year</b> | <b>Responsible Party</b> | <b>Cost Estimate</b> | <b>Funding Source</b>           | <b>Type Water Management</b>     |
| Promote use of conservation easements to protect sensitive natural environments, plants and animals.   | 2007-2011          | City, County, NRCS       | Unknown              | Unknown                         | Water quality                    |
| Promote use of conservation easements to protect sensitive natural environments, plants and animals.   | 2007-2011          | City, County, NRCS       | Unknown              | Unknown                         | Water quality                    |
| <b>Colquitt</b>  |                    |                          |                      |                                 |                                  |
| Continue clean up and preservation of Spring Creek   | 2007-2011          | City, County, NRCS       | Unknown              | Unknown                         | Water quality                    |
| Continue support of Best Management Practices as advocated by Natural Resources agencies, and enforcement of Clean Water Act, Endangered Species Act, environmental ordinances, Soil and Sedimentation Act and related ordinances. | 2007-2011          | City, County, NRCS       | Unknown              | Unknown                         | Water quality                    |
| Promote use of conservation easements to protect sensitive natural environments, plants and animals.   | 2007-2011          | City, County, NRCS       | Unknown              | Unknown                         | Water quality                    |
| <b>Mitchell County - LFO</b>   |                    |                          |                      |                                 |                                  |
| Align county water usage/conservation efforts w/ Georgia Comprehensive Water Management Plan   | 2008-2012          | County                   | \$5,000              | General Funds Grants            | Water quality and water quantity |
| Feasibility study for a water & sewer authority  | 2008-2011          | County                   | \$50,000             | General Funds                   | Water quality and water quantity |
| <b>Baconton</b>  |                    |                          |                      |                                 |                                  |
| Assess and prioritize the drainage problems in Baconton  | 2008, 2009         | City                     | \$4,000              | General Funds Grants            | Water quality                    |
| <b>Camilla</b>   |                    |                          |                      |                                 |                                  |
| Market the reuse of wastewater for cooling/irrigation to attract industry  | 2009               | City                     | \$75,000             | User Fees, Enterprise Fund      | Water quality and water quantity |
| Develop a wastewater reuse system  | 2012               | City                     | \$2 Million          | General Fund, User Fees, Grants | Water quality and water quantity |
| Work w/ state & federal agencies on monitoring groundwater/air quality/storm water runoff  | 2008-2012          | City                     | Staff time           | General Fund                    | Water quality                    |
| <b>Pelham</b>  |                    |                          |                      |                                 |                                  |
| None   |                    |                          |                      |                                 |                                  |
| <b>Sale City</b>   |                    |                          |                      |                                 |                                  |
| None   |                    |                          |                      |                                 |                                  |
| <b>Seminole County - LFO</b>   |                    |                          |                      |                                 |                                  |
| None   |                    |                          |                      |                                 |                                  |
| <b>Donalsonville</b>   |                    |                          |                      |                                 |                                  |
| Upgrade and raise the capacity of the sewer system   | 2007-2008          | City                     | \$1 Million          | Water and Sewer Funds           | Water quality                    |
| Increase the number of water mains/loops   | 2007-2012          | City                     | \$35,000             | Water and Sewer Funds           | Water quality and water quantity |
| <b>Iron City</b>   |                    |                          |                      |                                 |                                  |
| (None)   |                    |                          |                      |                                 |                                  |

Georgia Environmental Protection Division  
 Lower Flint-Ochlocknee Council  
**Existing Regulatory and Local Plan Summary**

| <b>Table A-3. Southwest Georgia Regional Commission – Review of Local Comprehensive Plans for Water Quality/Quantity BMPs</b> |                    |  |                      |   |                                  |
|---|--------------------|--|----------------------|---|----------------------------------|
| <b>Short Term Work Program Project</b>  | <b>Fiscal Year</b> | <b>Responsible Party</b>                       | <b>Cost Estimate</b> | <b>Funding Source</b>                                 | <b>Type Water Management</b>     |
| <b><i>Terrell County - LFO</i></b>  |                    |  |                      |   |                                  |
| Study the Feasibility of Developing a Public Water System   | 2010-2014          | County   | N/A                  |   | Water quality and water quantity |
| <b><i>Bronwood</i></b>  |                    |  |                      |   |                                  |
| Replace Undersized Water Mains  | 2010               | City   | \$200,000            | General Funds/<br>Grants                              | Water quality and water quantity |
| Make City-wide Drainage Improvements  | 2010-2014          | City   | \$100,000            | General Funds/<br>Grants                              | Water quality                    |
| Study feasibility for city sewer system   | 2010               | City   | N/A                  |   | Water quality                    |
| <b><i>Dawson</i></b>  |                    |  |                      |   |                                  |
| Water and Sewer Improvements  | 2010-2014          | City   | \$750,000            | General Funds/<br>Grants                              | Water quality and water quantity |
| <b><i>Parrott</i></b>   |                    |  |                      |   |                                  |
| (None)  |                    |  |                      |   |                                  |
| <b><i>Sasser</i></b>  |                    |  |                      |   |                                  |
| Replace Undersized Water Mains  | 2010-2014          | City   | \$150,000            | General Funds/<br>Grants                              | Water quantity                   |
| Install new well  | 2014               | City   | \$50,000             | General Funds/<br>Grants                              | Water quality and water quantity |
| Adopt ground water recharge ordinance (as required)   | 2014               | City   | N/A                  |   | Water quality                    |
| <b><i>Thomas County - LFO</i></b>   |                    |  |                      |   |                                  |
| Master Plan for Sanitary Sewer Basins in the Service Area.  | 2010               | County Engineer                                | \$80,000-<br>100,000 | General Fund;<br>possible participation of developers | Water quality                    |
| Ochlocknee River Protected River Designation and Regulation   | 2009               | Planning Director, and the Planning Commission | Staff function       | General Fund  | Water quality                    |
| <b><i>Boston</i></b>  |                    |  |                      |   |                                  |
| Continue tackling existing list of street drainage problems   | 2008-2012          | City   | \$30,000             | General Fund,<br>Grants                               | Water quality                    |
| <b><i>Coolidge</i></b>  |                    |  |                      |   |                                  |
| Implement needed water & sewer system improvements, fire hydrants & manholes  | 2008-2012          | City   | \$300,000            | General Fund,<br>CDBG                                 | Water quality and water quantity |
| Rehabilitate existing spray field   | 2008, 2009         | City   | \$610,000            | CDBG, SPLOST  | Water quality                    |
| Replace old water lines   | 2008-2012          | City   | \$500,000            | General Fund,<br>CDBG                                 | Water quality and water quantity |
| Replace Baffles at Wastewater Management Plant  | 2009               | City   | \$10,000             | Water and Sewer Fund                                  | Water quality                    |
| Replace Aerator at Wastewater Management Plant  | 2008,2009          | City   | \$15,00              | General Fund,<br>Grants                               | Water quality                    |



Georgia Environmental Protection Division  
 Lower Flint-Ochlockonee Council  
**Existing Regulatory and Local Plan Summary**

| <b>Table A-3. Southwest Georgia Regional Commission – Review of Local Comprehensive Plans for Water Quality/Quantity BMPs</b> |                    |                          |                      |                       |                              |
|---|--------------------|--------------------------|----------------------|-----------------------|------------------------------|
| <b>Short Term Work Program Project</b>  | <b>Fiscal Year</b> | <b>Responsible Party</b> | <b>Cost Estimate</b> | <b>Funding Source</b> | <b>Type Water Management</b> |
| <i><b>Meigs</b></i>   |                    |                          |                      |                       |                              |
| Improve/replace wastewater treatment plant  | 2009-2012          | City                     | \$\$\$\$\$           | General Fund, Grants  | Water quality                |
| Inventory and prioritize future street paving/resurfacing projects and coordinate water/sewer line replacement                | 2008-2012          | City                     | \$                   | General Fund          | Water quality                |
| <i><b>Ochlocknee</b></i>  |                    |                          |                      |                       |                              |
| Review and revise existing ordinance for best management practices  | 2008-2012          | City                     | \$                   | General Fund          | Water quality                |
| <i><b>Thomasville</b></i>   |                    |                          |                      |                       |                              |
| Gatlin Creek Road Extension to 84 (4.5 miles)   | 2012               | Water Department         | \$850,000            |                       | Water quantity               |
| Treatment Plant Upgrades  |                    | Sewer Department         | \$250,000            |                       | Water quality                |
| Prevent Inflow & Infiltration into system (420 manhole per yr)  | 2008-2012          | Sewer Department         | \$200,000 min        |                       | Water quality                |
| Insituform deteriorating sewer mains & services (2 miles per yr)  | 2008-2012          | Sewer Department         | \$400,000            |                       | Water quality                |
| Replace Older Water Mains in the System (4 miles per yr)  | 2008-2012          | Water Department         | \$600,000 min        |                       | Water quantity               |
| Upgrade Sewer Lift Stations (Pumps, Generators, etc)  | 2008-2012          | Sewer Department         | \$500,000            |                       | Water quality                |
| Automated Meter Reading System  | 2011               | Technical Services/CNS   | \$3 million          | Budget                | Water quantity               |
| Drainage mapping  | 2010-2012          | Engineering              | \$100,000            | General Fund          | Water quality                |
| <i><b>Worth County - LFO</b></i>  |                    |                          |                      |                       |                              |
| Continue to support and implement the County's Storm water Drainage Plan  | 2008-2012          | County, State            | \$50,000             | General Fund, Grants  | Water quality                |
| Update Part 5 Environmental Ordinances, i.e., Wetlands Ordinance, Groundwater Recharge Ordinance, etc..., as necessary        | 2010-2012          | County                   | N/A                  |                       | Water quality                |
| <i><b>Poulan</b></i>  |                    |                          |                      |                       |                              |
| Develop joint sewer services implementation and funding plan  | 2010-2012          | City, EDA, Task Force    | \$1,000              | General Fund          | Water quality                |
| Conduct Engineering studies for joint sewer system as feasible  | 2008-2012          | Sewer System Authority   | \$2,500              | General Fund          | Water quality                |
| Develop joint sewer system as feasible  | 2008-2012          | Sewer System Authority   | \$2,000,000          | CDBG, EDA             | Water quality                |
| Study feasibility of storm drainage improvements  | 2008-2012          | City Staff               | \$3,000              | SPLOST                | Water quality                |
| Implement storm drainage improvement as feasible  | 2008-2012          | City Staff               | \$500,000            | CDBG, General Fund    | Water quality                |



Georgia Environmental Protection Division  
 Lower Flint-Ochlockonee Council  
**Existing Regulatory and Local Plan Summary**

| <b>Table A-3. Southwest Georgia Regional Commission – Review of Local Comprehensive Plans for Water Quality/Quantity BMPs</b> |                    |                          |                      |                                 |                                  |
|---|--------------------|--------------------------|----------------------|---------------------------------|----------------------------------|
| <b>Short Term Work Program Project</b>  | <b>Fiscal Year</b> | <b>Responsible Party</b> | <b>Cost Estimate</b> | <b>Funding Source</b>           | <b>Type Water Management</b>     |
| <i>Sumner</i>   |                    |                          |                      |                                 |                                  |
| Upgrade water system to proposed industrial area within city  | 2008               | City, EDA                | \$200,000            | General Fund, Grants            | Water quality and water quantity |
| Drill new well  | 2008               | City                     | \$30,000             | SPLOST                          |                                  |
| Continue maintenance on city water lines  | 2008-2012          | City                     | \$15,000 annually    | General Fund                    | Water quality and water quantity |
| <i>Sylvester</i>  |                    |                          |                      |                                 |                                  |
| Expand Water and Sewer lines to additional parts of the city  | 2008-2012          | City                     | \$350,000            | CDBG, General Fund              | Water quality and water quantity |
| Upgrade sewer lines   | 2008-2012          | City                     | \$2.2 million        | Sewer Fund                      | Water quality                    |
| Construct 750,000 gallon water tank, and extensions to Isabella water system  | 2008-2012          | City                     | \$200,000            | GEFA and water enterprise funds | Water quality and water quantity |
| <i>Warwick</i>  |                    |                          |                      |                                 |                                  |
| (None)  |                    |                          |                      |                                 |                                  |

Georgia Environmental Protection Division  
 Lower Flint-Ochlockonee Council  
**Existing Regulatory and Local Plan Summary**

**Table A-4. State and Federally Protected Aquatic Species Specific to the Lower Flint-Ochlockonee Water Planning Region**

| Scientific Name                | Common Name                   | Federal Status | State Status | Group         |
|--------------------------------|-------------------------------|----------------|--------------|---------------|
| <i>Amphiuma pholeter</i>       | One-toed Amphiuma             |                | Rare         | Amphibians    |
| <i>Haideotriton wallacei</i>   | Georgia Blind Salamander      |                | Threatened   | Amphibians    |
| <i>Alosa alabamae</i>          | Alabama Shad                  |                | Threatened   | Fish          |
| <i>Ameiurus serracanthus</i>   | Spotted Bullhead              |                | Rare         | Fish          |
| <i>Cyprinella callitaenia</i>  | Bluestripe Shiner             |                | Rare         | Fish          |
| <i>Enneacanthus chaetodon</i>  | Blackbanded Sunfish           |                | Endangered   | Fish          |
| <i>Micropterus notius</i>      | Suwannee Bass                 |                | Rare         | Fish          |
| <i>Notropis hypsilepis</i>     | Highscale Shiner              |                | Rare         | Fish          |
| <i>Pteronotropis welaka</i>    | Bluenose Shiner               |                | Threatened   | Fish          |
| <i>Alasmidonta triangulata</i> | Southern Elktoe               |                | Endangered   | Invertebrates |
| <i>Amblema neislerii</i>       | Fat Threeridge                | Endangered     | Endangered   | Invertebrates |
| <i>Anodonta heardi</i>         | Apalachicola Floater          |                | Rare         | Invertebrates |
| <i>Anodontoides radiatus</i>   | Rayed Creekshell              |                | Threatened   | Invertebrates |
| <i>Cambarus cryptodytes</i>    | Dougherty Plain Cave Crayfish |                | Threatened   | Invertebrates |
| <i>Cambarus doughertyensis</i> | Dougherty Burrowing Crayfish  |                | Endangered   | Invertebrates |
| <i>Elliptio arctata</i>        | Delicate Spike                |                | Endangered   | Invertebrates |
| <i>Elliptio nigella</i>        | Winged Spike                  |                |              | Invertebrates |
| <i>Elliptio purpurella</i>     | Inflated Spike                |                | Threatened   | Invertebrates |
| <i>Elliptoideus sloatianus</i> | Purple Bankclimber            | Threatened     | Threatened   | Invertebrates |
| <i>Hamiota subangulata</i>     | Shinyrayed Pocketbook         | Endangered     | Endangered   | Invertebrates |
| <i>Medionidus penicillatus</i> | Gulf Moccasinshell            | Endangered     | Endangered   | Invertebrates |
| <i>Medionidus simpsonianus</i> | Ochlockonee Moccasinshell     | Endangered     | Endangered   | Invertebrates |
| <i>Pleurobema pyriforme</i>    | Oval Pigtoe                   | Endangered     | Endangered   | Invertebrates |
| <i>Procambarus gibbus</i>      | Muckalee Crayfish             |                | Threatened   | Invertebrates |
| <i>Strophitus subvexus</i>     | Southern Creekmussel          |                | Endangered   | Invertebrates |
| <i>Graptemys barbouri</i>      | Barbour's Map Turtle          |                | Threatened   | Reptiles      |
| <i>Macrochelys temminckii</i>  | Alligator Snapping Turtle     |                | Threatened   | Reptiles      |

Notes: Data provided by the Department of Natural Resources – Wildlife Resources Division. Detailed species accounts are available at the following website: <<http://www.georgiawildlife.com/node/1379>>

Georgia Environmental Protection Division  
 Lower Flint-Ochlockonee Council  
**Existing Regulatory and Local Plan Summary**

| <b>Table A-5, High Priority Waters for Protecting Aquatic Biodiversity in the Lower Flint-Ochlockonee Water Planning Region</b>  |   |
|--|---|
| <b>Classification</b>  | <b>Waters</b>   |
| High Priority Aquatic Community Stream   | None  |
| High Priority Species Stream   | Cooleewahee Creek, Swift Creek, Flint River, Sawhatchee Creek, Kirkland Creek, Dry Creek, Spring Creek, Ochlockonee River Tributary, Ochlockonee River, Muckalee Creek, Flint River, Ichawaynochaway Creek, Chickasawhatchee Creek, Wolf Creek, Big Creek Tributary, Abrams Creek, Mill Creek |
| High Priority Species and Aquatic Community Streams  | None  |
| Source: Georgia Rare Species and Natural Community Information: High Priority Waters. Georgia Department of Natural Resources – Wildlife Resources Division, < <a href="http://www.georgiawildlife.com/node/1377">http://www.georgiawildlife.com/node/1377</a> > |   |

The logo for Georgia's State Water Plan features a blue outline of the state of Georgia on the left. To its right, the text "Georgia's" is in a smaller blue font, and "State Water Plan" is in a larger, bold blue font. A horizontal blue brushstroke underline extends from the bottom of the text across the page.

# Georgia's State Water Plan

## Lower Flint-Ochlockonee Water Council

February 21, 2011

Tim Cash  
Georgia Environmental Protection Division  
4220 International Parkway, Suite 101  
Atlanta, GA 30354

Dear Tim:

As you know, at its last meeting, the Lower Flint-Ochlockonee Water Council approved, by full consensus of the council, support for a Section 319(h) grant proposal from the Golden Triangle Resource Conservation and Development (RC& D) Council.

Last fall, the council was informed by EPD of an opportunity created by the Section 319(h) grant program for funding for nonpoint source control projects identified by the regional water councils. The Golden Triangle RC&D project will implement nonpoint source control on dirt roads in a subwatershed (Spring Creek) that has been identified as critical habitat for endangered and threatened freshwater mussels. The Council recognizes the importance of improving nonpoint source pollutant control practices in the region and endorses this project as an important step in attaining this objective.

The project is consistent with the council's vision and goals, and it meets the eligibility criteria for the 319(h) grant program. The council can adopt appropriate language in support of the project into its regional Water Development and Conservation Plan and/or supplemental materials, as directed by your guidance and as needed to meet the requirements of the grant program.

The Lower Flint-Ochlockonee Water Council is pleased to have the opportunity to support this project.

Sincerely,

Richard Royal, Chairman  
Lower Flint-Ochlockonee Water Council

cc:  
Chris Faulkner, EPD  
Sandy Tucker, USFWS

Addressing Unpaved Road Issues in the Spring Creek Watershed/Lower Flint-Ochlockonee Water Council Area

**Project Summary  
(ABSTRACT)**

**Project Title:** Addressing Unpaved Road Issues in the Spring Creek Watershed/Lower Flint-Ochlockonee Water Council Area

**Lead Organization:** NAME Golden Triangle RC&D Council  
 Address 822-R Jesse Johnson St.  
 City, GA zip Blakely, GA 39823  
 Phone: (229) 723-3841  
 Fax: (229) 723-3842

**Primary Contact:** NAME Frank Yancey  
 TITLE RC&D Coordinator  
 ORGANIZATION NAME Golden Triangle RC&D Council  
 Address 822-R Jesse Johnson St.  
 City, GA zip Blakely, GA 39823  
 Phone: (229) 723-3841  
 Fax: (229) 723-3842  
 E-mail: frank.yancey@ga.usda.gov

**Funding:**

|                            |               |
|----------------------------|---------------|
| Federal Funds Requested    | \$ 100,000.00 |
| Non-Federal Matching Funds | \$ 67,000.00  |
| Total Project Funds        | \$167,000.00  |

**Project Start Date:** November, 2011

**Completion Date:** November, 2013

**Project Location:**

The project location is an unpaved road in Nichol's Subdivision, located in Seminole County, GA within the Spring Creek Watershed (HUC 03130010)

**Project Background:**

The Golden Triangle RC&D in partnership with the Lower Flint-Ochlockonee Water Council, requests funding from the GA Environmental Protection Division's 319(h) non-point source pollution grant funds to address sedimentation loading into Spring Creek from an unpaved road in Nichol's Subdivision/Seminole County, GA.

## Addressing Unpaved Road Issues in the Spring Creek Watershed/Lower Flint-Ochlockonee Water Council Area

The goal of this project is to eliminate sediment loading in this area by utilizing unpaved road best management practices found in the "GA Better Back Roads Field Manual". The site work will not only solve the erosion and sediment loading problem, but will serve as a demonstration site for other counties interested in undertaking similar work.

### **Objectives:**

The objective of this project is to promote the efforts of the Lower Flint-Ochlockonee Water Council while eliminating a source of sediment loading into Spring Creek. Through this project, the Golden Triangle RC&D will:

- Complete an unpaved road demonstration project in Nichol's Subdivision - Seminole County, GA
- Work to reduce or eliminate sediment loading from the unpaved road site
- Determine amount of sediment loading reduced from the project
- Promote the use of unpaved road BMP's through the demonstration project
- Hold an unpaved road BMP workshop/dedication event to highlight the project and educate the public

### **Activities:**

- Determine best unpaved road practice(s) to be utilized following BMP's recommended in the Georgia Better Back Roads Field Manual
- Work with partners in implementing BMP practice(s)
- Estimate sediment load reductions expected for the recommended management practice(s). Examples of methods that may be utilized include:
  - STEPL Model
  - USEPA Region V Model
- Document results
- Hold an unpaved road BMP workshop and dedication event to highlight project

### **Outputs:**

- A completed unpaved road project in Nichol's Subdivision-Seminole County, GA
- Photo documentation of BMP implementation
- Project information on the Golden Triangle RC&D's and the Spring Creek Watershed Partnership's website
- All applicable local, state and federal permits
- A minimum of one (1) unpaved road workshop/dedication event
- Press release(s) on project
- A report provided to the Lower-Flint Ochlockonee Water Council
- Semi-annual progress reports (one hard copy and one electronic copy) will be submitted each February 28 and August 31 for inclusion in the USEPA Grants Reporting and Tracking System.
- A Final Closeout Report (two hard copies and one electronic copy) will be submitted to GAEPD and USEPA for review and approval.

Addressing Unpaved Road Issues in the Spring Creek Watershed/Lower Flint-Ochlockonee Water Council Area

**Expected Outcome:**

- Successfully assist the Lower Flint-Ochlockonee Water Council in promoting their visions and goals
- Alleviate a source of sediment loading into Spring Creek through the use of unpaved road Best Management Practices
- Educate the public on unpaved road Best Management Practices through press releases, a workshop and presentations

**Budget Summary:**

| <b>NPS Pollution Activities</b>     | <b>319(h) Grant</b>         | <b>Non-Federal</b>     |
|-------------------------------------|-----------------------------|------------------------|
| <b><u>Funds</u></b>                 | <b><u>Funds</u></b>         | <b><u>Matching</u></b> |
| BMP Demonstration Projects          | \$100,000.00                | \$67,000.00            |
| Restoration/Protection/Prevention   |                             |                        |
| Education/Information               |                             |                        |
| Technical Assistance                |                             |                        |
| Regulatory/Enforcement Activities   |                             |                        |
| Planning Activities                 |                             |                        |
| Water Quality Assessment/Monitoring |                             |                        |
|                                     | TOTALS: <u>\$100,000.00</u> | <u>\$ 67,000.00</u>    |
|                                     | (60%)                       | (40%)                  |