



Georgia's
State Water Plan

Joint Meetings

www.georgiawaterplanning.org

Joint Meeting Objective

- The primary objective of the joint meetings is to provide Council members with a working knowledge of the resource assessments.
- This knowledge will allow planning to move forward with Gap Analysis and Management Practices Selection.

<p>Coosa, Tallapoosa & Tennessee River Basins Valley and Ridge, Blue Ridge, Piedmont Aquifers</p> <p>Monday, January 25, 2010 Location: Carrollton or Dawsonville</p> <p><i>Councils that share these resources:</i></p> <ul style="list-style-type: none"> • Coosa-North Georgia WPC • MNGWPD • Savannah-Upper Ogeechee WPC • Middle Chattahoochee WPC 	<p>Chattahoochee River Basin Piedmont Aquifer</p> <p>Monday, February 1, 2010 Location: Columbus or Callaway Gardens</p> <p><i>Councils that share these resources:</i></p> <ul style="list-style-type: none"> • Coosa-North Georgia WPC • Middle Chattahoochee WPC • MNGWPD • Upper Flint WPC • Lower Flint-Ochlockonee WPC
<p>Altamaha, Ocmulgee & Oconee River Basins Eastern Coastal Plain Cretaceous, Piedmont Aquifers</p> <p>Friday, January 22, 2010 Location: Macon</p> <p><i>Councils that share these resources:</i></p> <ul style="list-style-type: none"> • Altamaha WPC • Coastal Georgia WPC • Middle Ocmulgee WPC • MNGWPD • Suwanee-Satilla WPC • Upper Flint WPC • Upper Oconee WPC • Counties of Savannah-Upper Ogeechee and Coastal WPC in the Cretaceous Aquifer 	<p>Flint & Ochlockonee River Basins Dougherty Plain, Claiborne Aquifers</p> <p>Friday, January 15, 2010 Location: Americus</p> <p><i>Councils that share these resources:</i></p> <ul style="list-style-type: none"> • Lower Flint-Ochlockonee WPC • Middle Chattahoochee WPC • Middle Ocmulgee WPC • MNGWPD • Upper Flint WPC
<p>Satilla, Suwanee & St. Mary's River Basins South Central Georgia Floridan Aquifer</p> <p>Thursday, January 28, 2010 Location: Waycross</p> <p><i>Councils that share these resources:</i></p> <ul style="list-style-type: none"> • Altamaha WPC • Lower Flint-Ochlockonee WPC • Coastal Georgia • Suwannee-Satilla WPC • Southern Counties of the Upper Flint WPC in the South Central Georgia Floridan Aquifer 	<p>Savannah & Ogeechee River Basins Brunswick Harbor Aquifer Model, Savannah CSSI Model, Eastern Coastal Plain Upper Floridan Aquifer</p> <p>Tuesday, January 19, 2010 Location: Augusta</p> <p><i>Councils that share these resources:</i></p> <ul style="list-style-type: none"> • Altamaha WPC • Coastal Georgia WPC • Savannah-Upper Ogeechee WPC • Upper Oconee WPC • Eastern Counties of Suwannee Satilla WPC in the Eastern Coastal Plain Upper Floridan

Draft Agenda

- Meeting approximately 8 hours long, including breaks and lunch

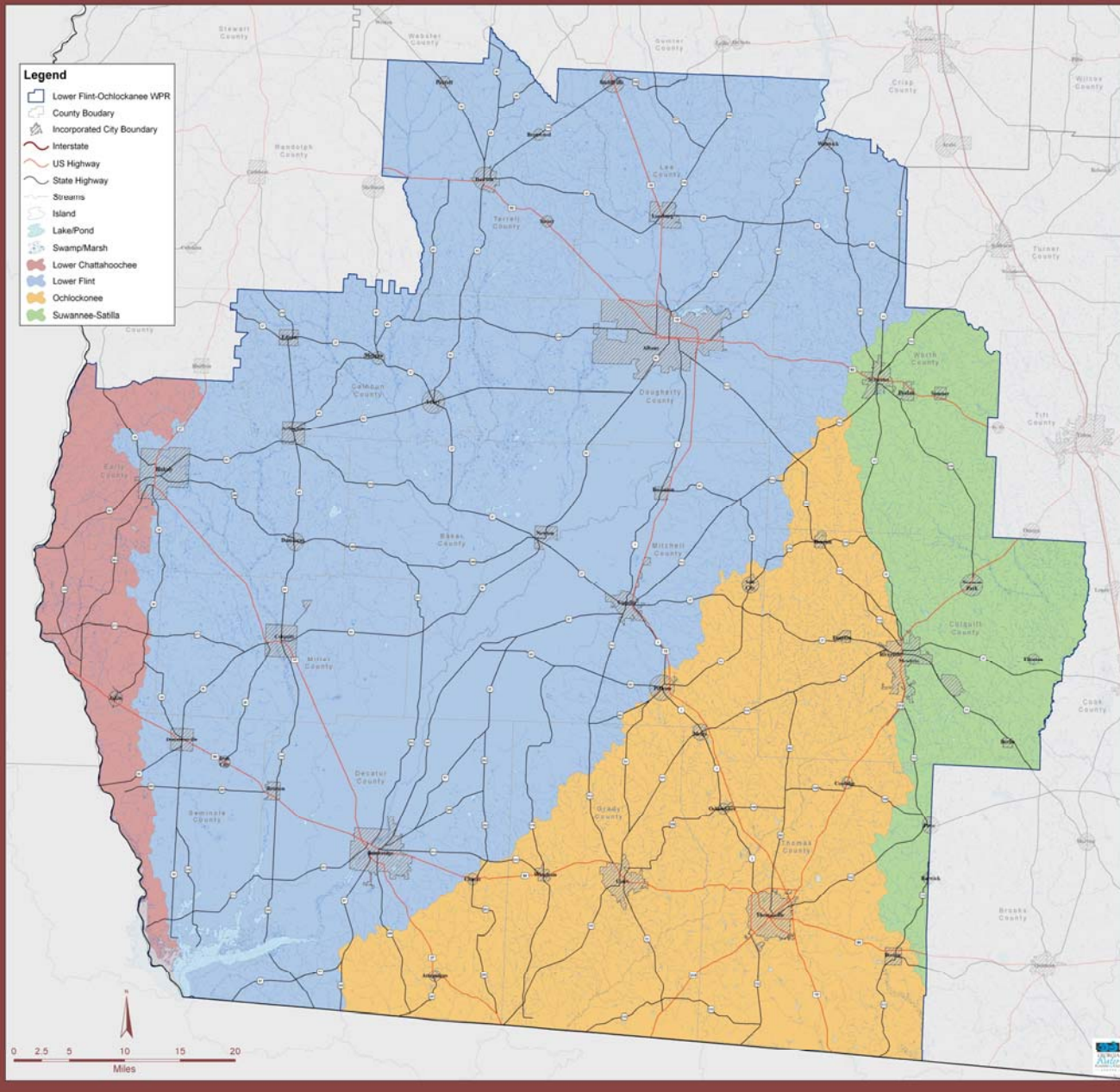
Agenda

- **Welcome and Charge to Meeting Participants** (15-30 minutes)
- **Resource Assessment Presentation and Discussion: Ground Water** (~90 minutes)
 - Overview of Methodology and Assumptions
 - Results for aquifers in grouping

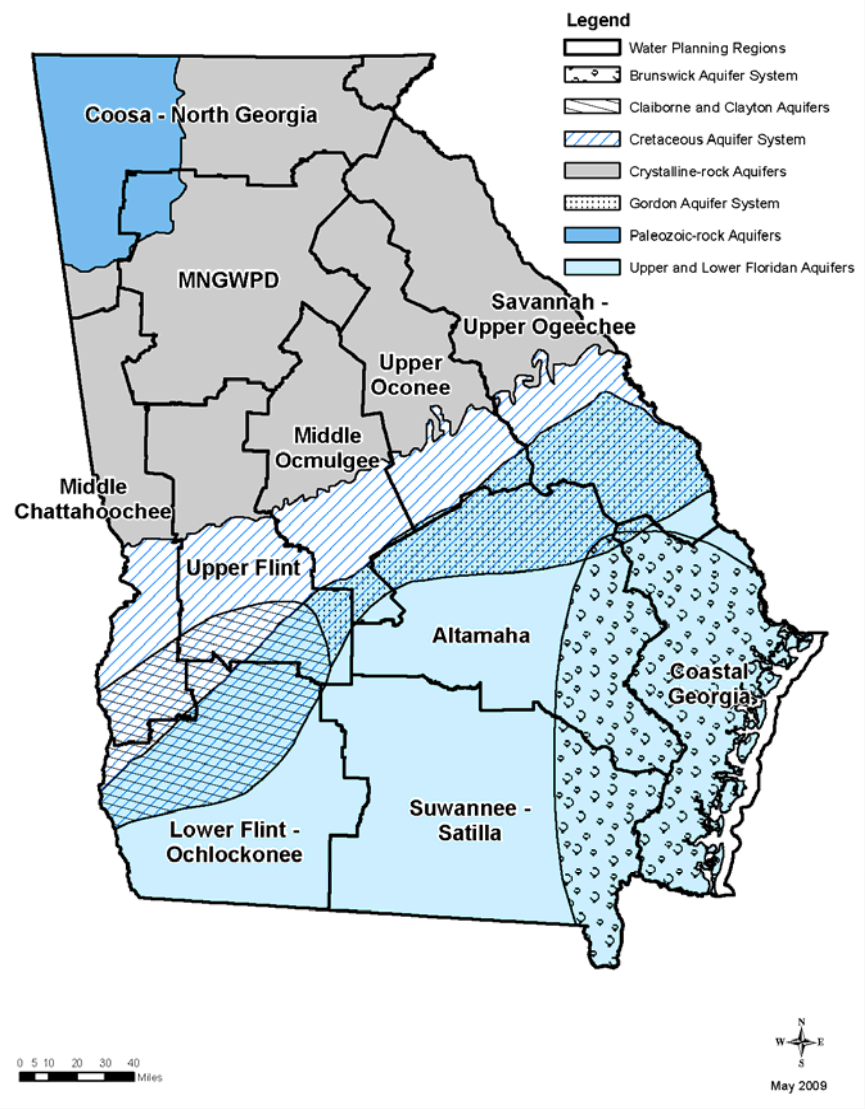
Draft Agenda (cont.)

- **Resource Assessment Presentation and Discussion: Surface Water Quantity** (~90 minutes)
 - Overview of Methodology and Assumptions
 - Results for surface watersheds in grouping
- **Resource Assessment Presentation and Discussion: Surface Water Quality** (90 -110 minutes)
 - Overview of Methodology and Assumptions
 - Results for watersheds in grouping
- **Future Steps and Wrap Up** (20-45 minutes)
- **Technical Discussions Open House** (stations for each resource assessment) (60-120 minutes)

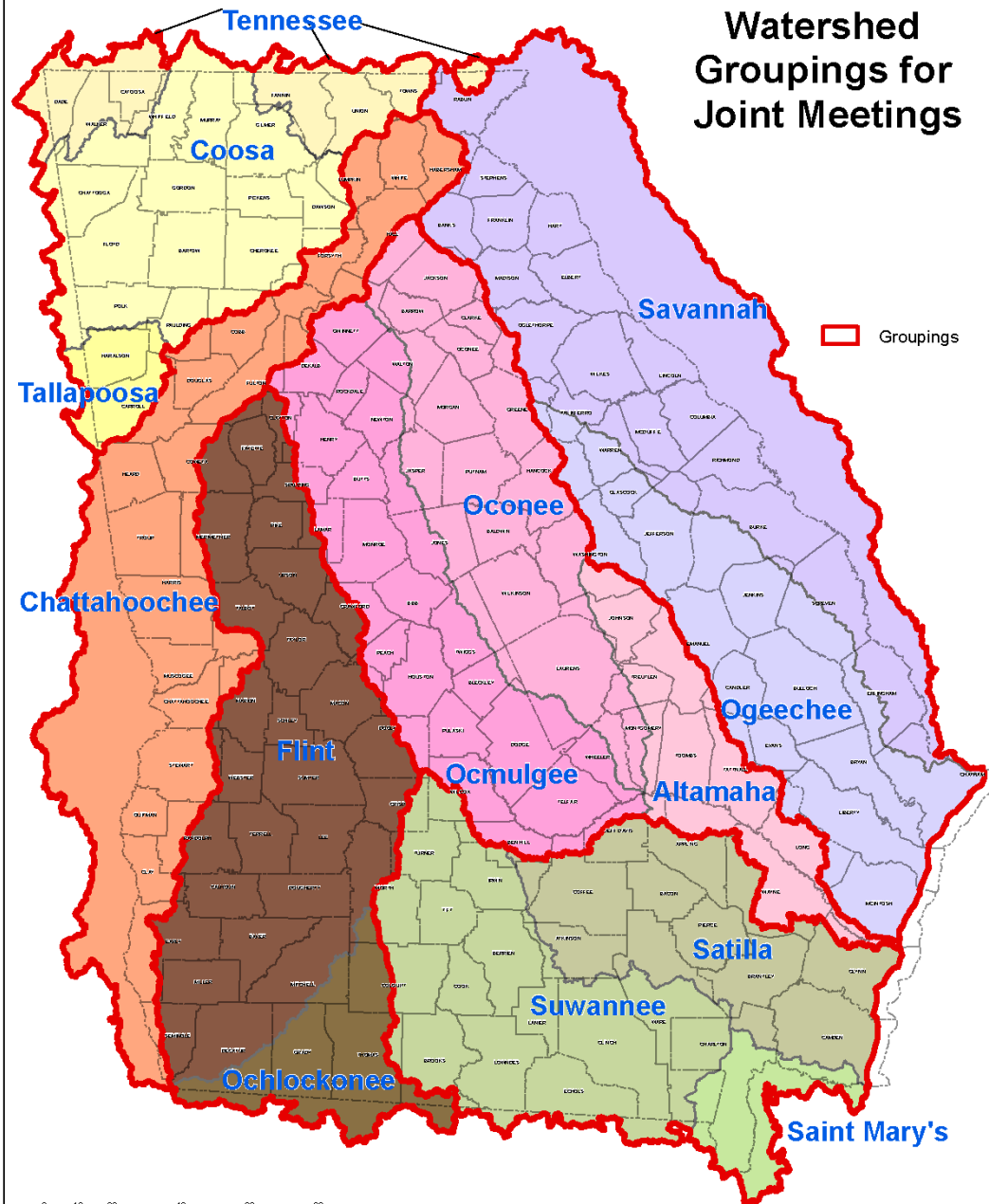
Lower Flint-Ochlockonee Water Planning Region



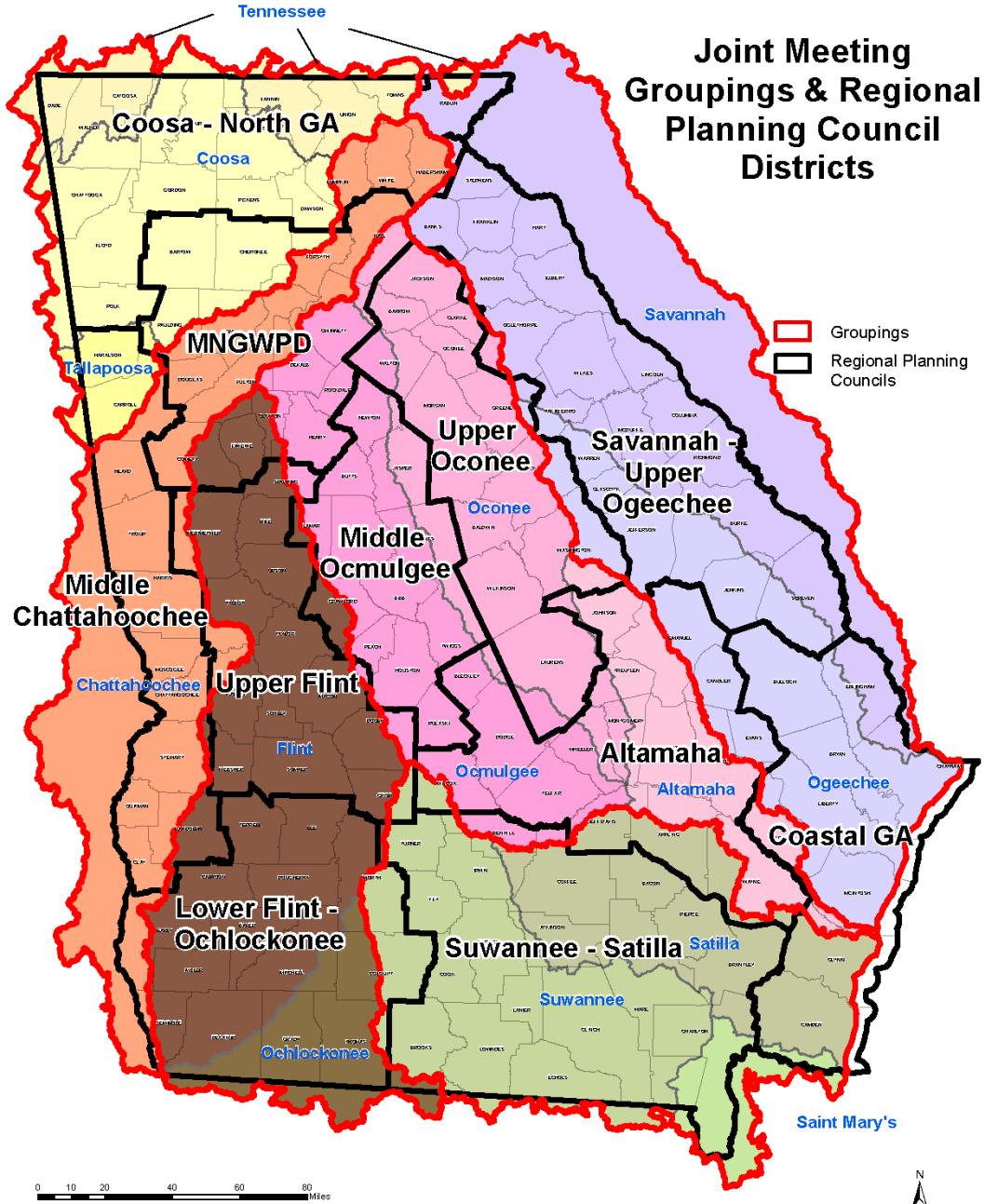
Water Planning Regions With Aquifers



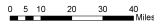
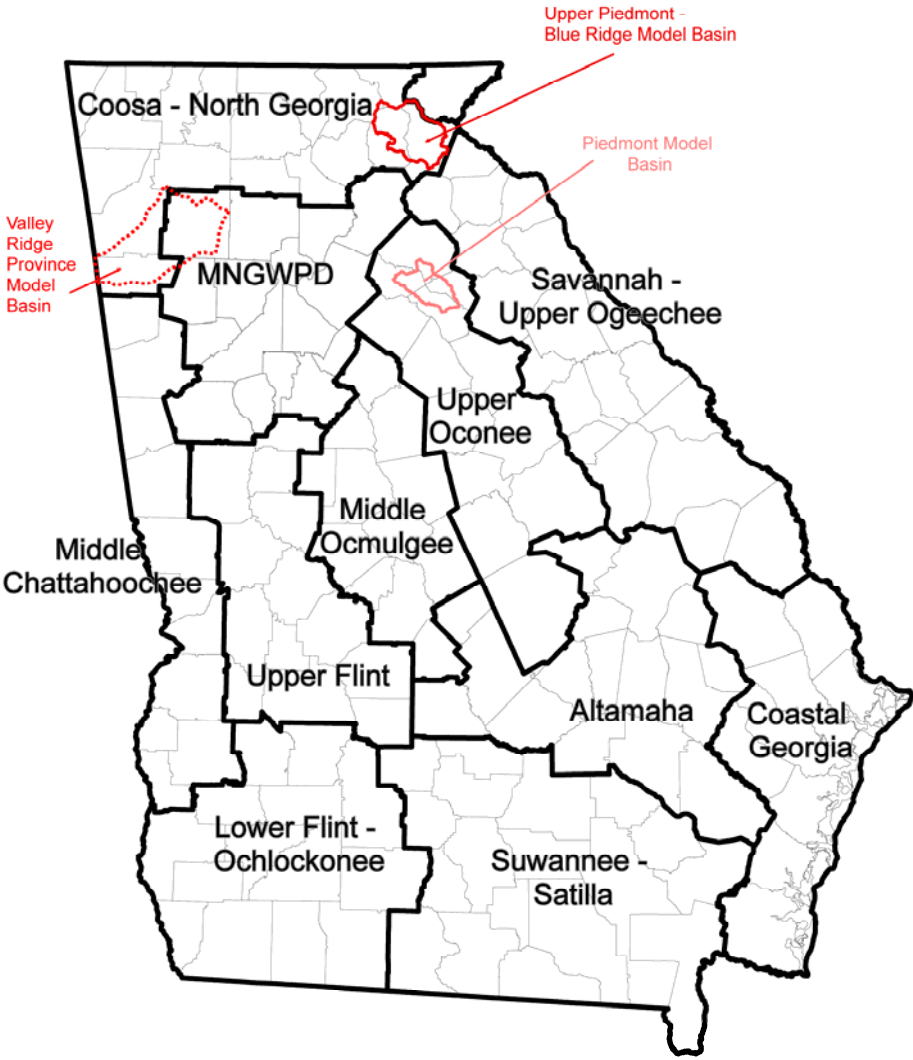
Watershed Groupings for Joint Meetings



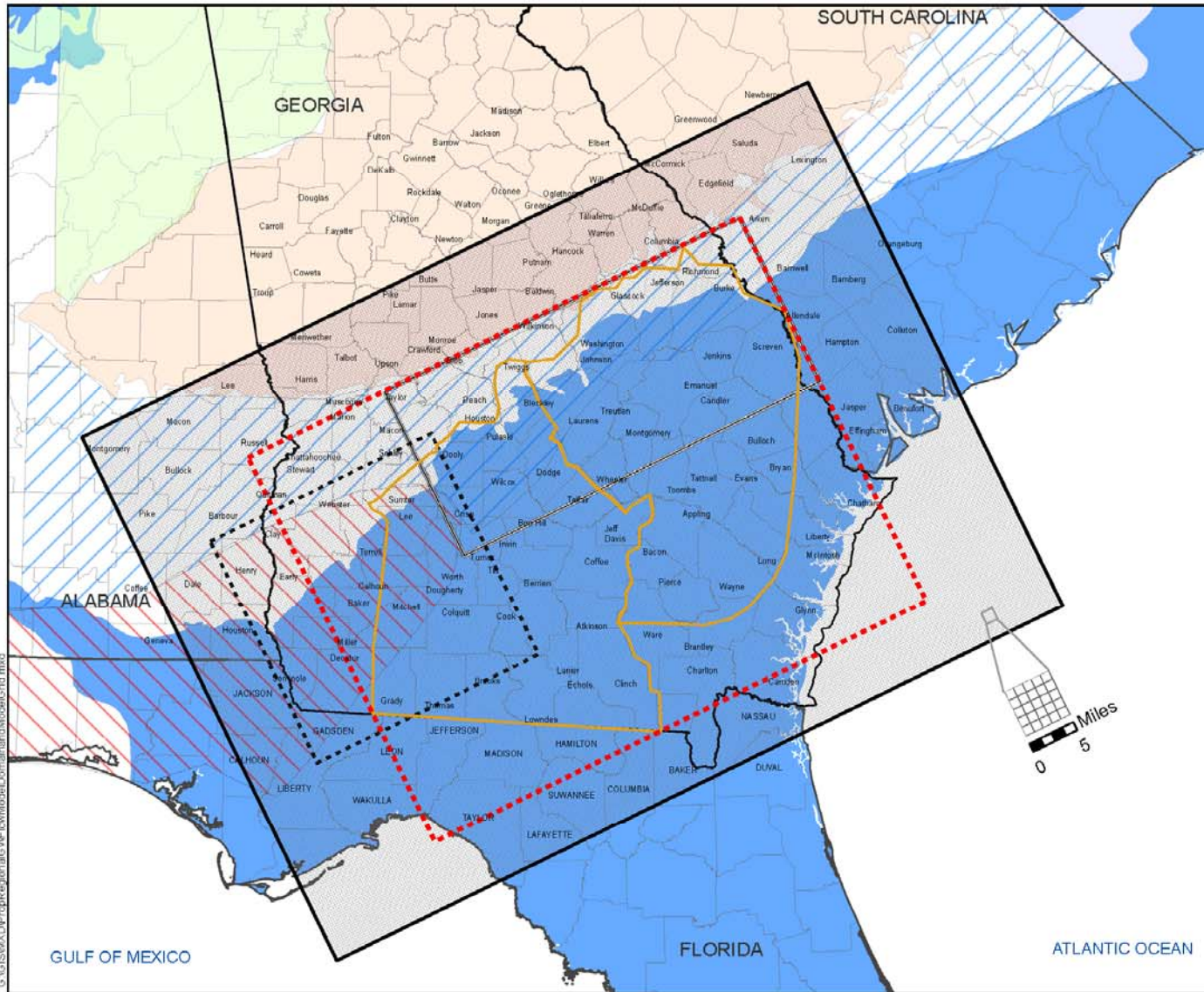
Joint Meeting Groupings & Regional Planning Council Districts



Water Balance Models



March 2009



Legend

Model Domains

- Proposed South Georgia Coastal Plain Model
- T1T and Extension Upper Floridan Aquifer Model Area
- UFA Model Boundary
- Local-Scale Claiborne Aquifer Model Boundary
- Local-Scale Cretaceous Aquifer Model Boundary

Aquifers

- Floridan Aquifer System
- Claiborne Aquifer
- Cretaceous Aquifer System
- Paleozoic-rock Aquifers
- Crystalline-rock Aquifers

Figure 1
Proposed Regional
Groundwater Flow Model Domain
and Model Grid System

© GIS/MDP/Region/GM/FLOW/ModelDomain/ModelGrid.mxd