



Georgia's  
**State Water Plan**

Council Coordination

[www.georgiawaterplanning.org](http://www.georgiawaterplanning.org)

## Why council coordination?

- Topic of interest raised at Leadership Meeting, July 13, 2009
- Learn about shared resources
- Discuss management practices
- Ensure consistency across planning regions
- Called for in Statewide Water Management Plan

# Council Coordination

- Communication between councils
- Meetings and discussions between councils
- “Joint Meetings” to receive resource assessments

# Council Coordination

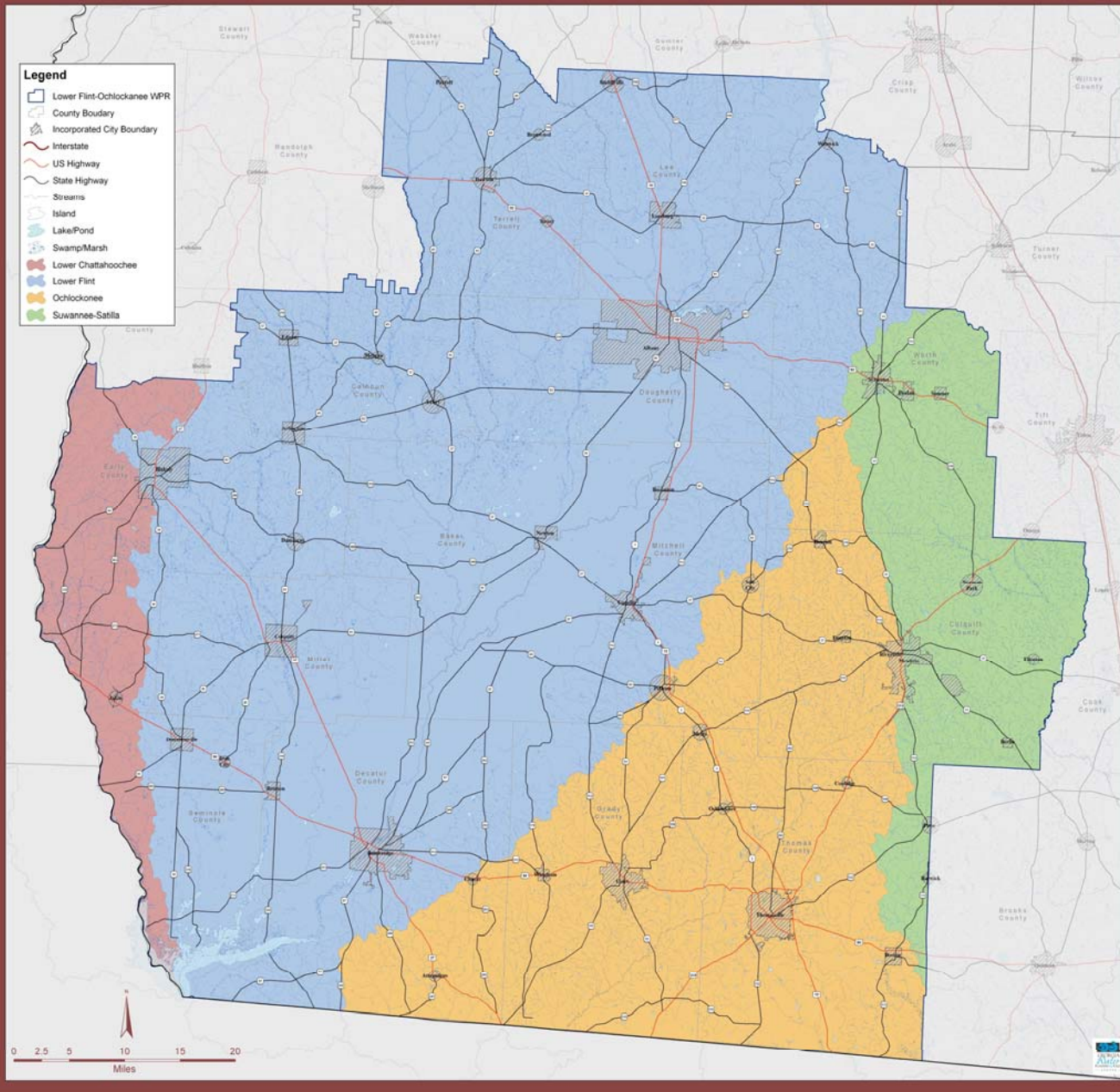
## Joint meetings are “Resource Based”

- “Resource” is a watershed or an aquifer
- Resource Assessments on surface water availability, ground water availability and surface water quality will be presented
- Multiple councils invited and in attendance at each joint meeting
- Ensure all Councils receive same type of information at the same time

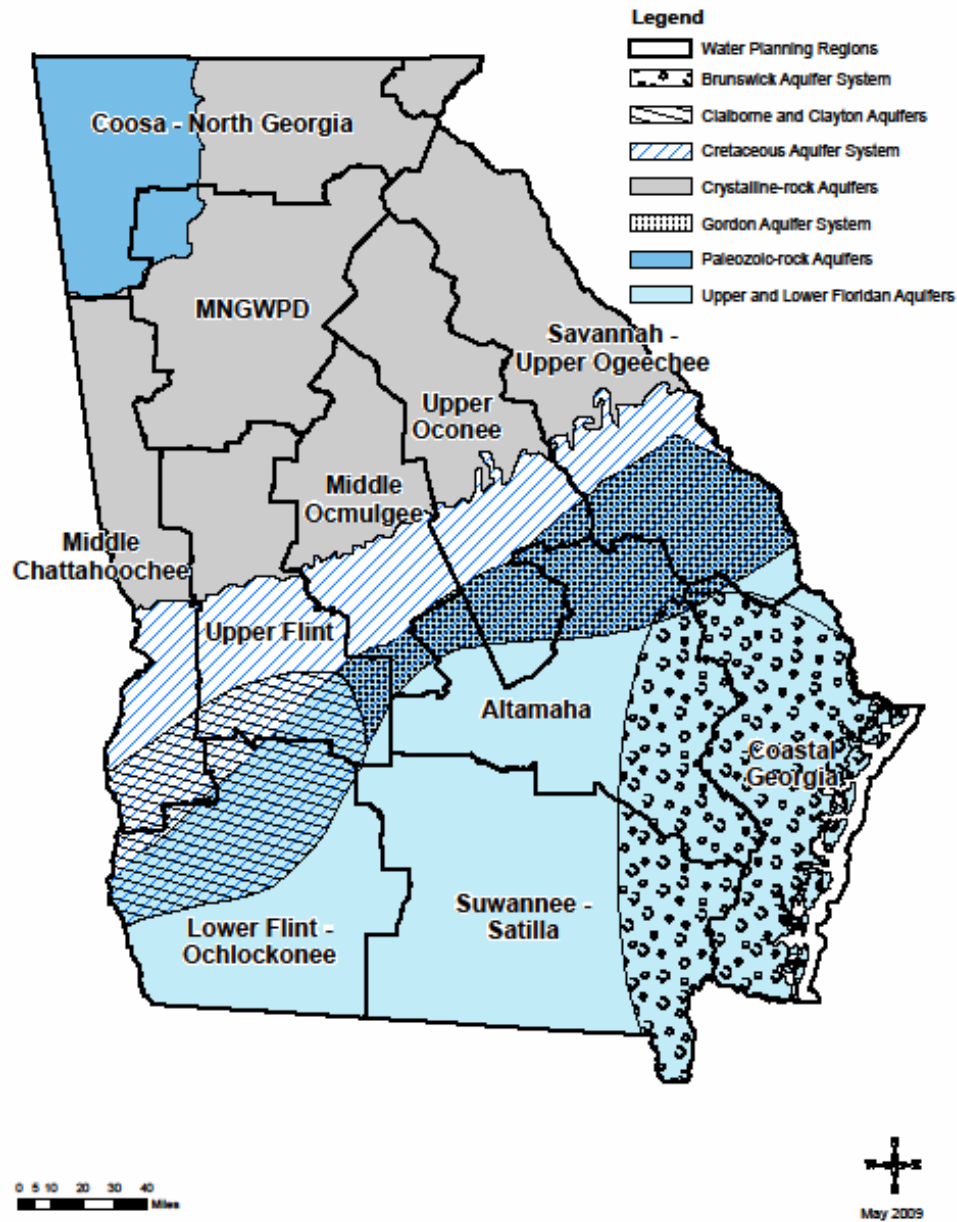
## Joint Meeting Tentative Schedule

- Series of 6 meetings held across the state to cover all resources
- First round of Joint Meetings will be held in January 2010
- Next round of joint meetings scheduled for April 2010

# Lower Flint-Ochlockonee Water Planning Region



# Water Planning Regions With Aquifers



## Resource Assessment Presentation Groupings

(Proposed for January and April 2010 Joint Meetings)

<b>Coosa, Tallapoosa &amp; Tennessee River Basins Valley and Ridge, Blue Ridge, Piedmont Aquifers</b>	<b>Chattahoochee River Basin Piedmont Aquifer</b>
<i>Councils invited to attend:</i>	<i>Councils invited to attend:</i>
<ul style="list-style-type: none"> <li>• Coosa-North Georgia WPC</li> <li>• MNGWPD</li> <li>• Savannah-Upper Ogeechee WPC</li> <li>• Middle Chattahoochee WPC</li> </ul>	<ul style="list-style-type: none"> <li>• Coosa-North Georgia WPC</li> <li>• Middle Chattahoochee WPC</li> <li>• MNGWPD</li> <li>• Upper Flint WPC</li> </ul>
<b>Altamaha, Ocmulgee &amp; Oconee River Basins Eastern Coastal Plain Cretaceous, Piedmont Aquifers</b>	<b>Flint &amp; Ochlockonee River Basins Dougherty Plain, Claiborne Aquifers</b>
<i>Councils invited to attend:</i>	<i>Councils invited to attend:</i>
<ul style="list-style-type: none"> <li>• Altamaha WPC</li> <li>• Coastal Georgia WPC</li> <li>• Middle Ocmulgee WPC</li> <li>• MNGWPD</li> <li>• Suwanee-Satilla WPC</li> <li>• Upper Flint WPC</li> <li>• Upper Oconee WPC</li> <li>• Counties of Savannah-Upper Ogeechee and Coastal WPC in the Cretaceous Aquifer</li> </ul>	<ul style="list-style-type: none"> <li>• Lower Flint-Ochlockonee WPC</li> <li>• Middle Chattahoochee WPC</li> <li>• Middle Ocmulgee WPC</li> <li>• MNGWPD</li> <li>• Upper Flint WPC</li> </ul>
<b>Satilla, Suwanee &amp; St. Mary's River Basins Tift County Upper Floridan Aquifer</b>	<b>Savannah &amp; Ogeechee River Basins Brunswick Harbor Aquifer Model, Savannah CSSI Model, Eastern Coastal Plain Upper Floridan Aquifer</b>
<i>Councils invited to attend:</i>	<i>Councils invited to attend:</i>
<ul style="list-style-type: none"> <li>• Altamaha WPC</li> <li>• Lower Flint-Ochlockonee WPC</li> <li>• Coastal Georgia</li> <li>• Suwanee-Satilla WPC</li> <li>• Southern Counties of the Upper Flint WPC in the Tift Co Floridan Aquifer</li> </ul>	<ul style="list-style-type: none"> <li>• Altamaha WPC</li> <li>• Coastal Georgia WPC</li> <li>• Savannah-Upper Ogeechee WPC</li> <li>• Upper Oconee WPC</li> <li>• Eastern Counties of Suwanee Satilla WPC in the Eastern Coastal Plain Upper Floridan</li> </ul>